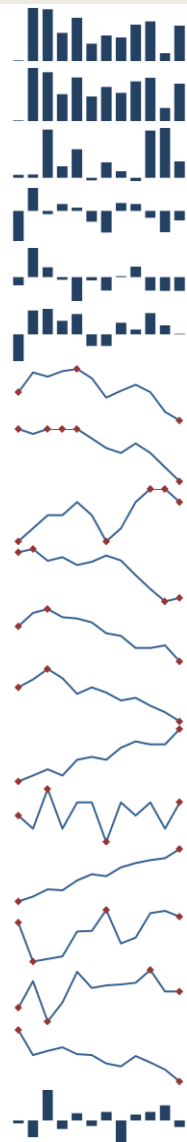


## Data Insights: Jobs

Friday, May 5, 2017

### Today's jobs data: what you need to know

<b>Non-farm payrolls</b>	Change Apr: +211	Revision Mar: -19	Revision Feb: +13	
<b>Private payrolls</b>	Change Apr: +194	Revision Mar: -12	Revision Feb: +1	
<b>Employment</b>	Change Apr: +156			
<b>Unemployment</b>	Change Apr: -146			
<b>Long-term unemployment</b>	Change Apr: -166			
<b>Civilian labor force</b>	Change Apr: +12	4.72 million below trend	More than all entrants employed	
<b>Unemployment rate</b>	Apr: 4.40%	Change Apr: -0.09%		
<b>Underemployment rate</b>	Apr: 8.6%	Change Apr: -0.3%		
<b>Participation rate</b>	Apr: 62.9%	Change Apr: -0.1%		
<b>UE adjusted for participation</b>	Apr: 8.9%	Change Apr: +0.06%		
<b>Average weeks unemployed</b>	Apr: 24.1	Change Apr: -1.2		
<b>% longterm unemployed</b>	Apr: 22.6%	Change Apr: -0.7%		
<b>Aggregate hours worked index</b>	Apr: 106.8	Change Apr: +0.5%	Revision Mar: -0	
<b>Average hourly earnings</b>	Apr: +0.3%	Change Apr: +0.2%	Revision Mar: -0.1%	
<b>Aggregate weekly earnings</b>	Apr: 133.7	Change Apr: +0.7%	Revision Mar: -0.1	
<b>Monthly job-finding probability</b>	Apr: 34.4%	Change Apr: -0.9%		
<b>Monthly separation probability</b>	Apr: 1.9%	Change Apr: -0.0%		
<b>% involuntary part-time</b>	Apr: 3.4%	Change Apr: -0.2%		
<b>"Household" vs "Payroll" jobs</b>	Change Apr: -205			

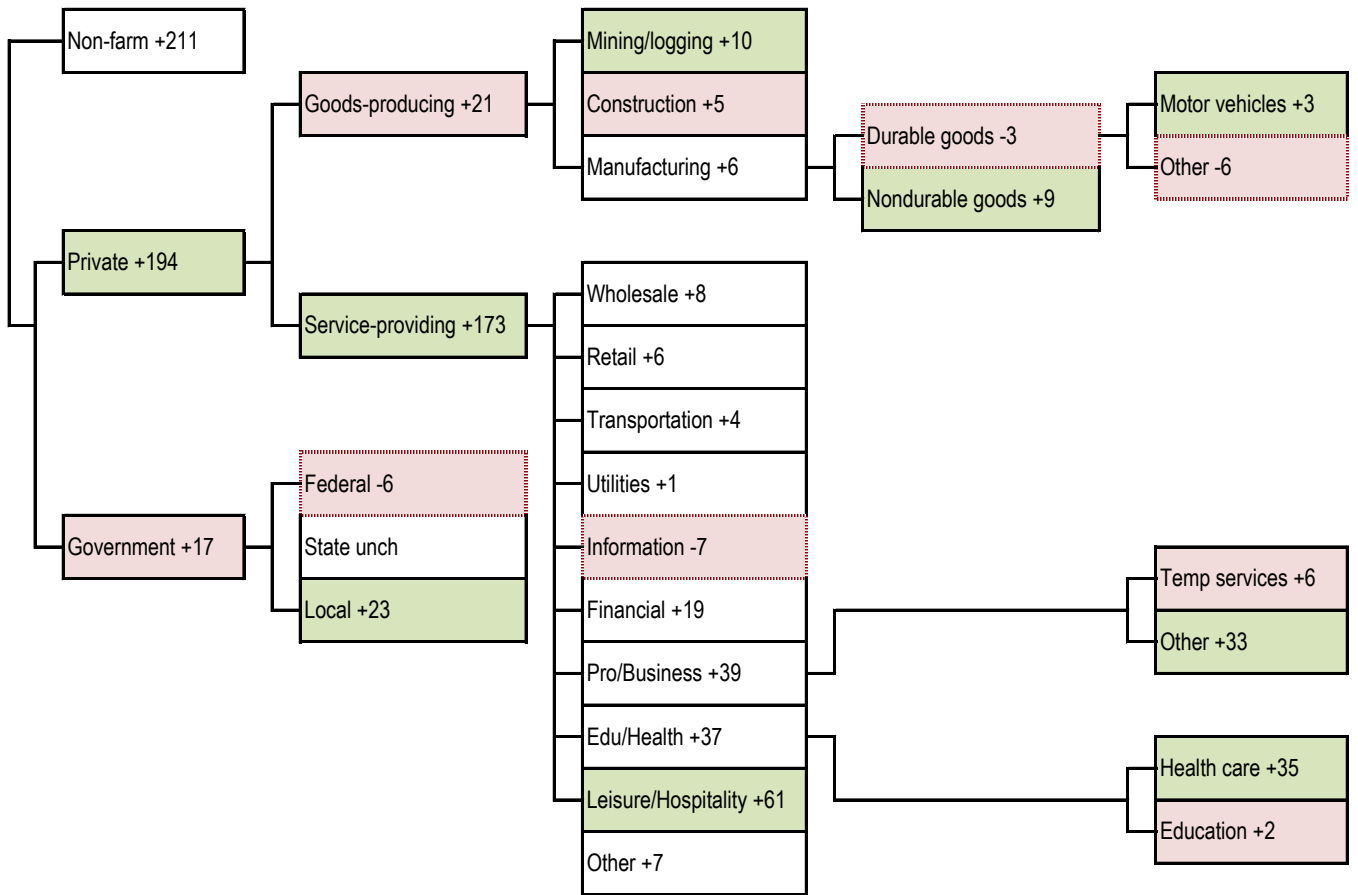
Source: Bureau of Labor Statistics, TrendMacro calculations

#### For more information contact us:

Donald Luskin: 312 273 6766 [don@trendmacro.com](mailto:don@trendmacro.com)  
 Thomas Demas: 704 552 3625 [tdemas@trendmacro.com](mailto:tdemas@trendmacro.com)

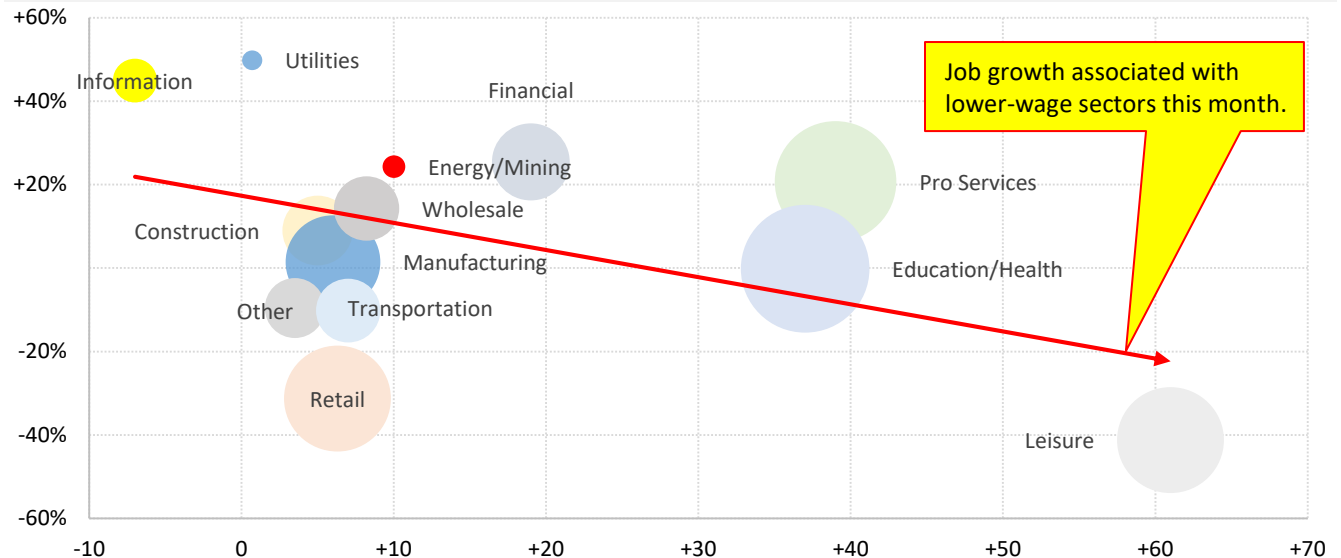
# Today's payroll data: what you need to know -- where did the jobs come from?

Sequential month change, thousands SA --- Net job losses Biggest change per detail module: ■ best ■ worst



## Where is the pay coming from?

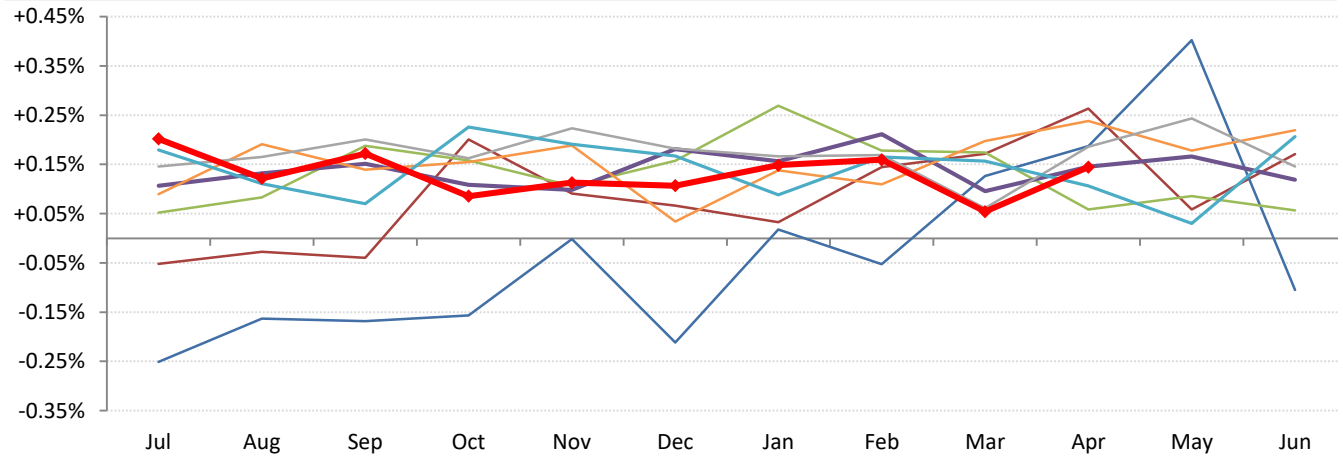
Vertical: Hourly wages vs average Horizontal: Payrolls change this month Circle size: Share of all employment



Source: BLS, TrendMacro calculations

## The payroll cycle in the Not So Great Expansion following the Great Recession

Growth MOM from July — 09-10 — 10-11 — 11-12 — 12-13 — 13-14 — 14-15 — 2015-16 — 2016-17

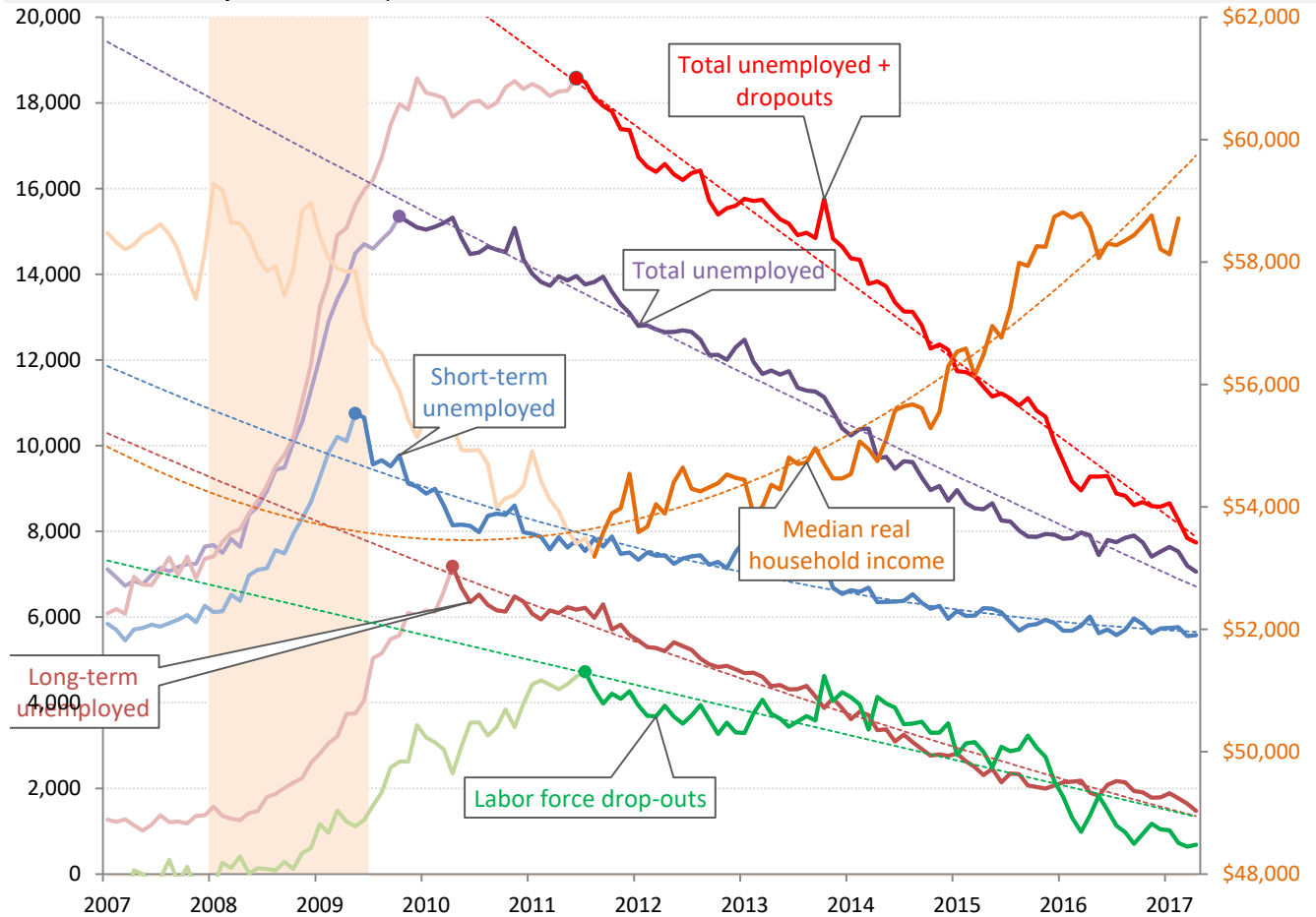


Source: BLS Current Population Survey, TrendMacro calculations

## The ultimate jobless recovery is becoming jobful

Unemployment: thousands Short-term = <27 weeks Long-term = >27 weeks

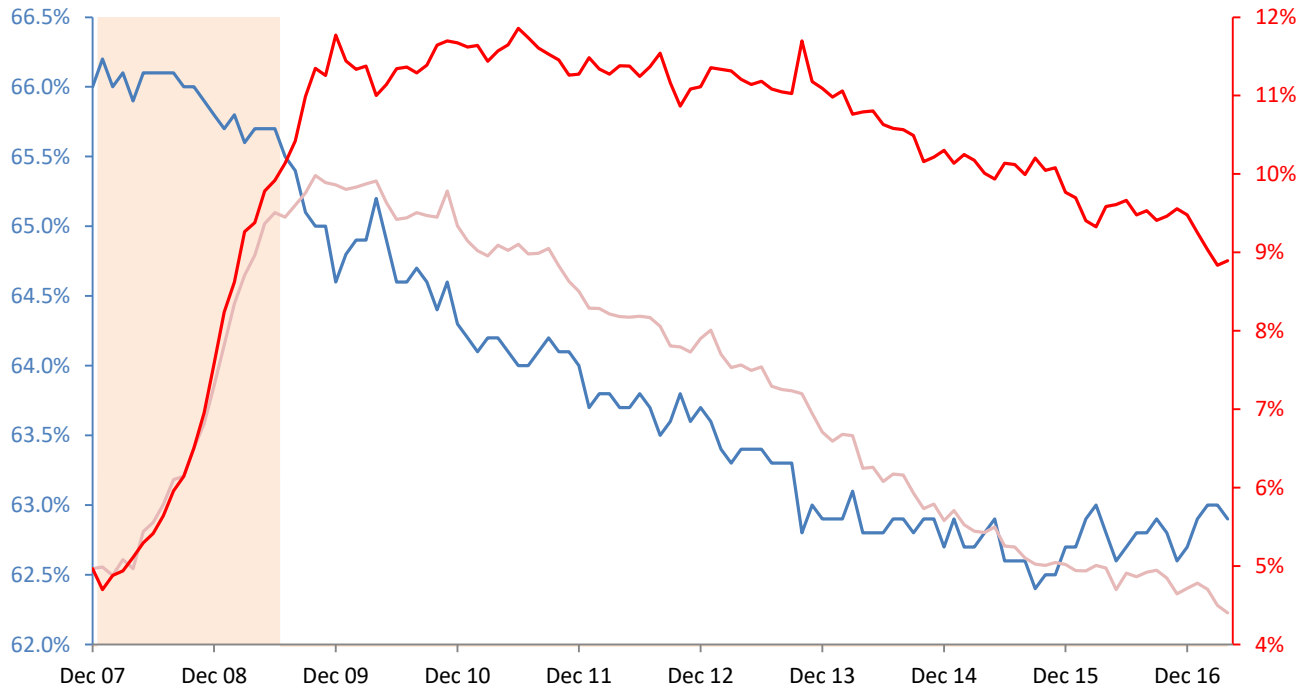
Income inflation adjusted to today's USD



Source: BLS Current Population Survey, TrendMacro calculations

## Unemployment rate normalized for participation rate December 2007

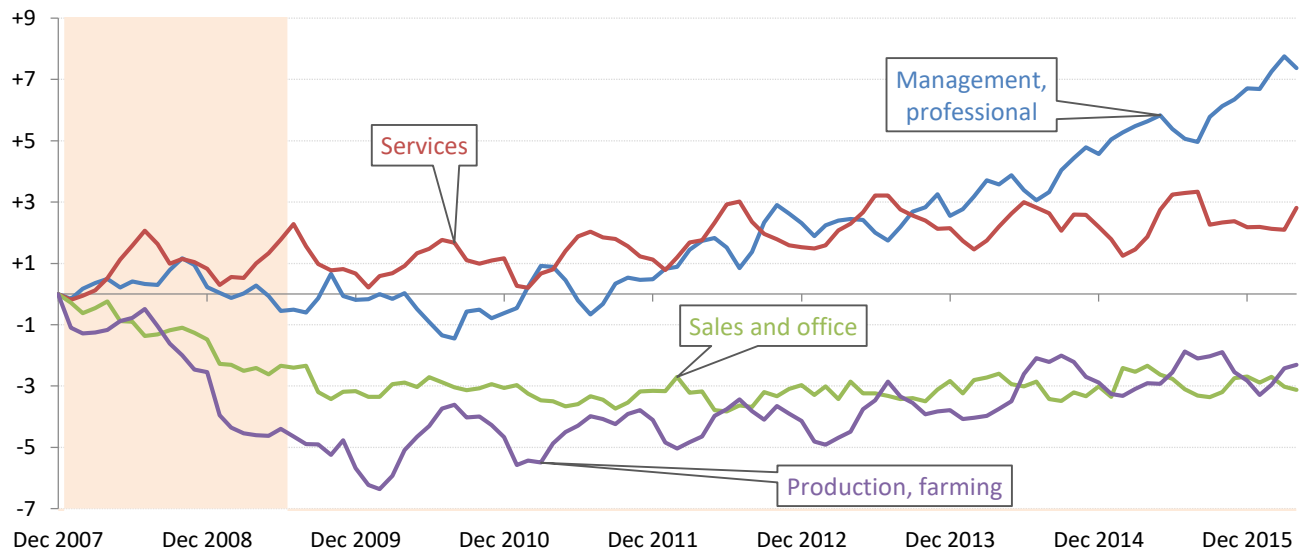
— Participation rate — Headline unemployment rate — Recession



Source: BLS Current Population Survey, TrendMacro calculations

## Winner and losers in the Not So Great Expansion following the Great Recession

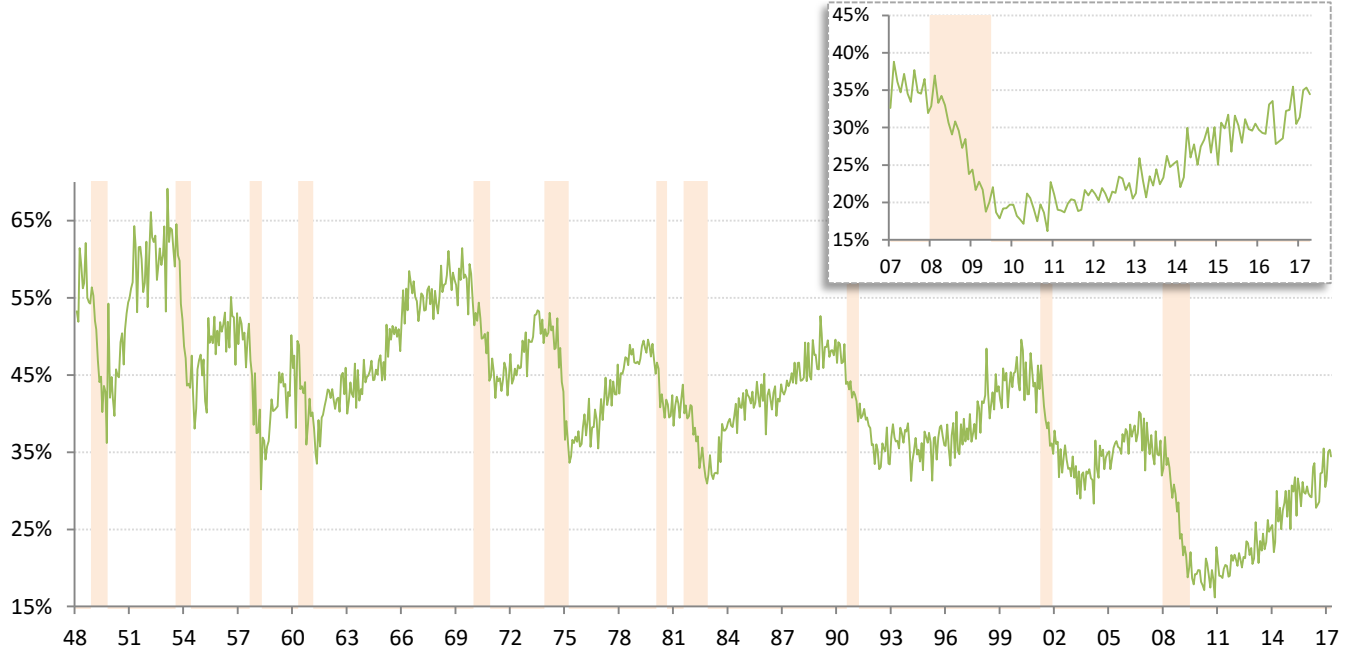
Change in total payrolls from prior business cycle peak, millions



Source: BLS, NBER, TrendMacro calculations

## Monthly job-finding probability (the outflow rate from unemployment)

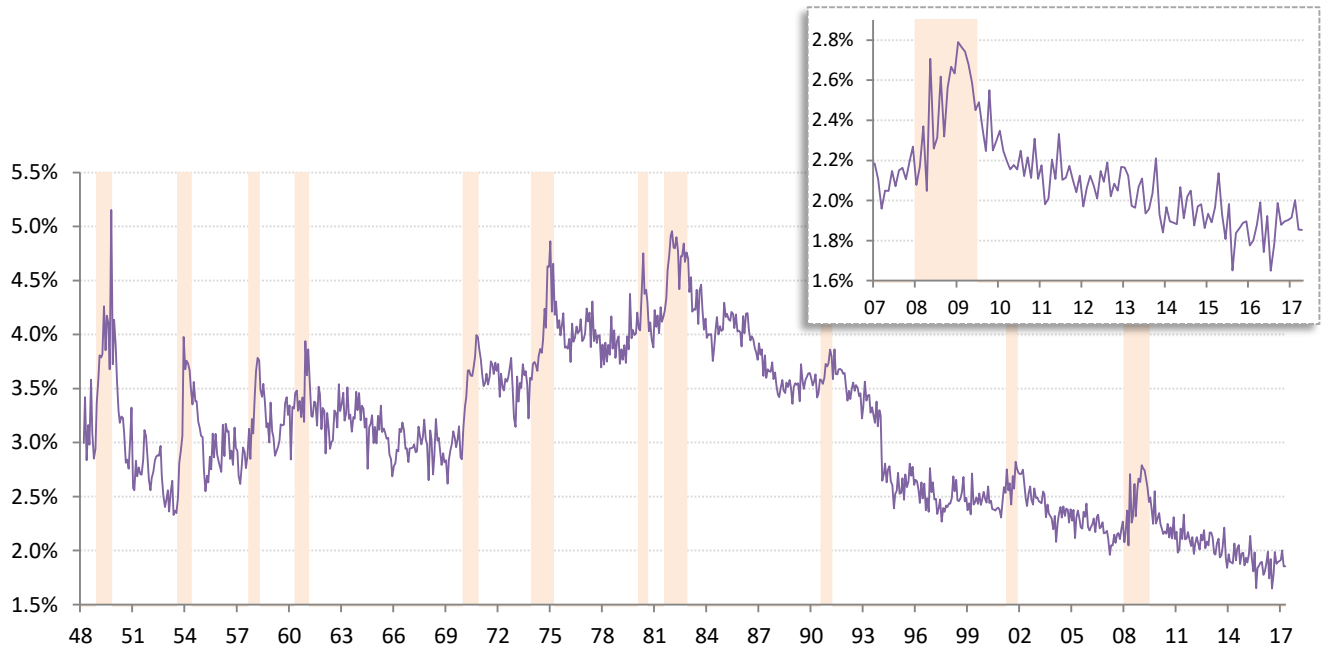
Chance of an unemployed person becoming employed in one month (per [Shimer 2005](#))   Recession



Source: BLS Current Population Survey, TrendMacro calculations

## Monthly job-separation probability (the inflow rate to unemployment)

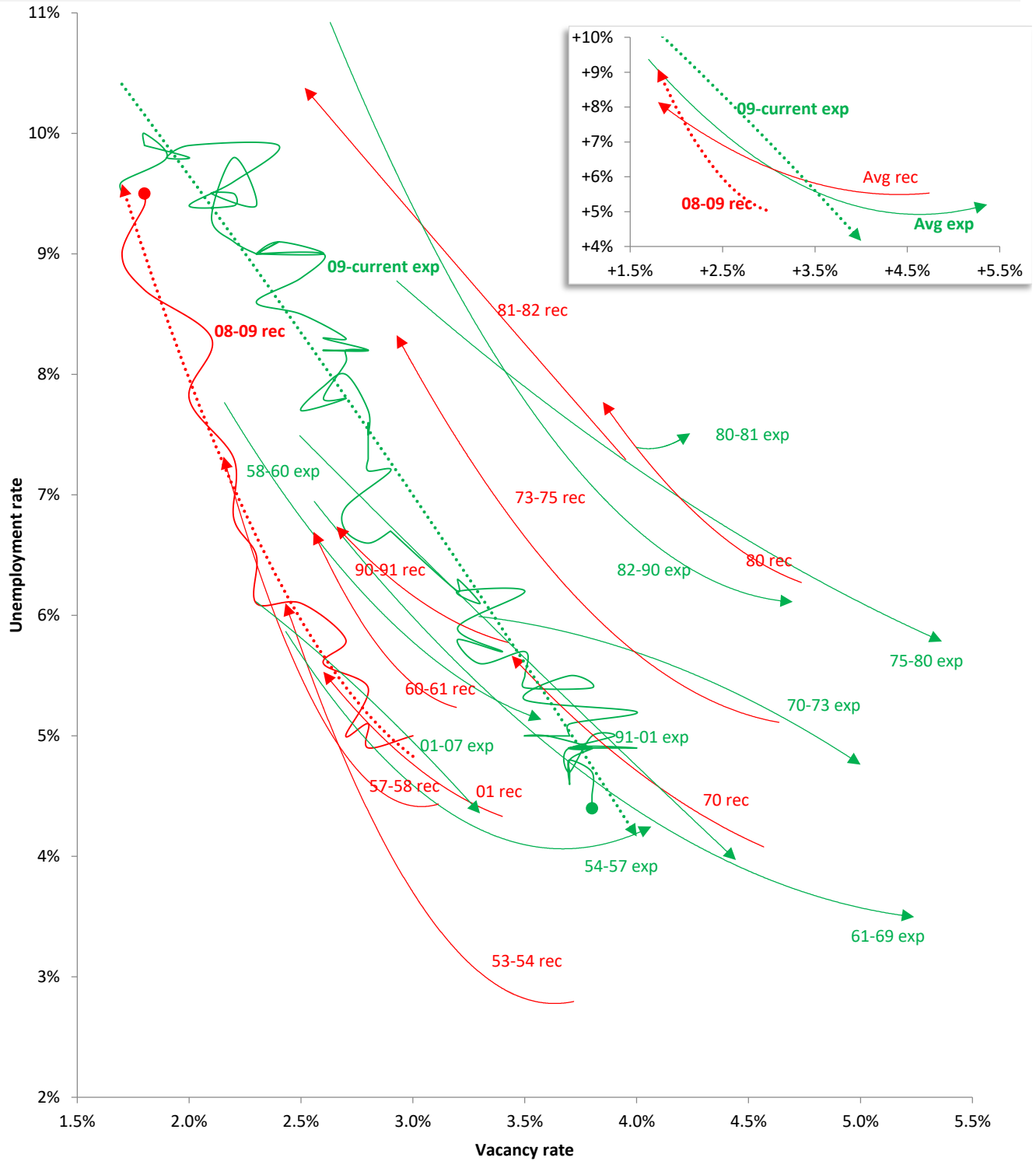
Chance of an employed person becoming unemployed in one month (per [Shimer 2005](#))   Recession



Source: BLS Current Population Survey, TrendMacro calculations

# The Beveridge Curve Cycle relationship between unemployment and job openings

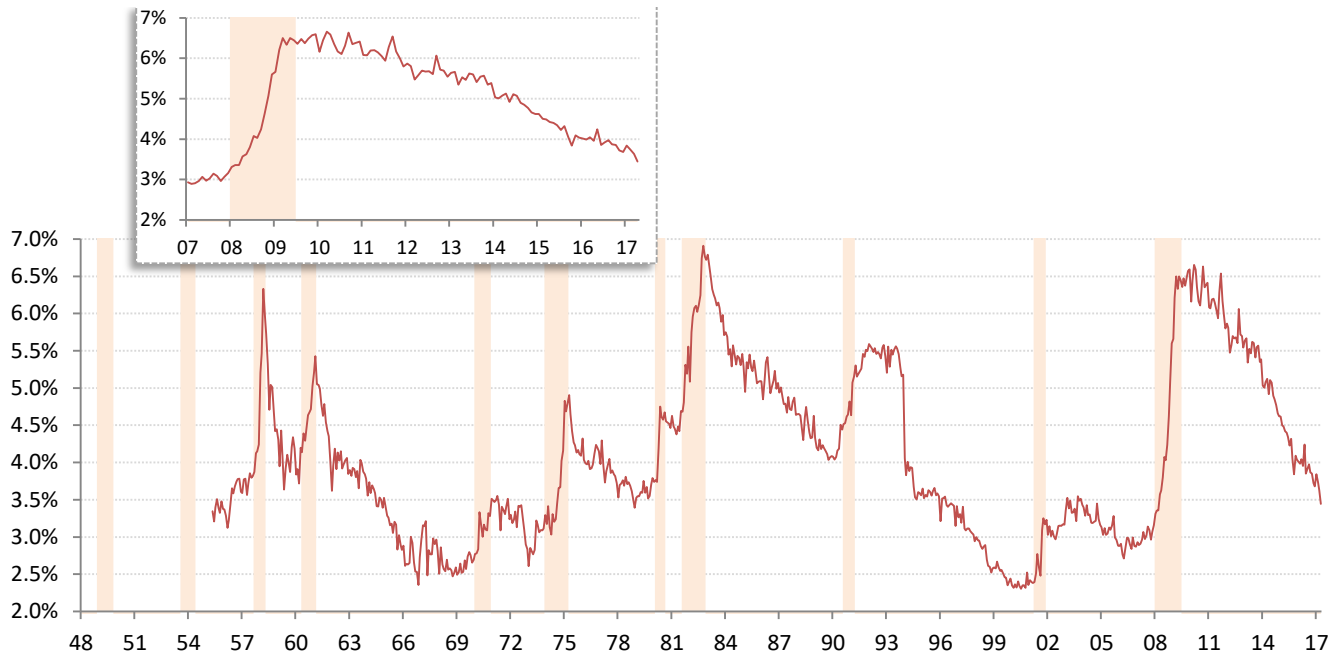
— Expansion — Recession Polynomial trend (order 2), plus monthly plots for 09-current expansion • Latest



Source: BLS Current Population Survey & JOLTS. Pre-2000:Conference Board normalized per [Valletta \(2005\)](#), TrendMacro calculations

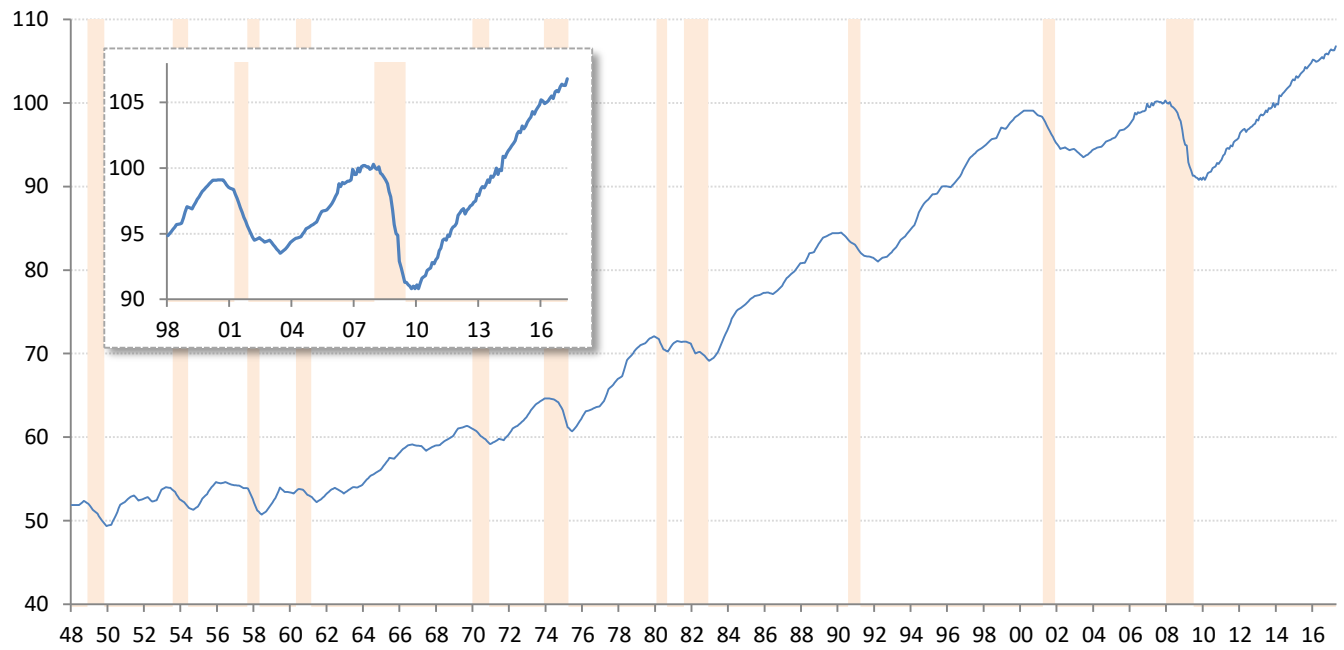
# Involuntary part-time workers as percentage of the employed labor force

Persons available for full-time work ■ Recession



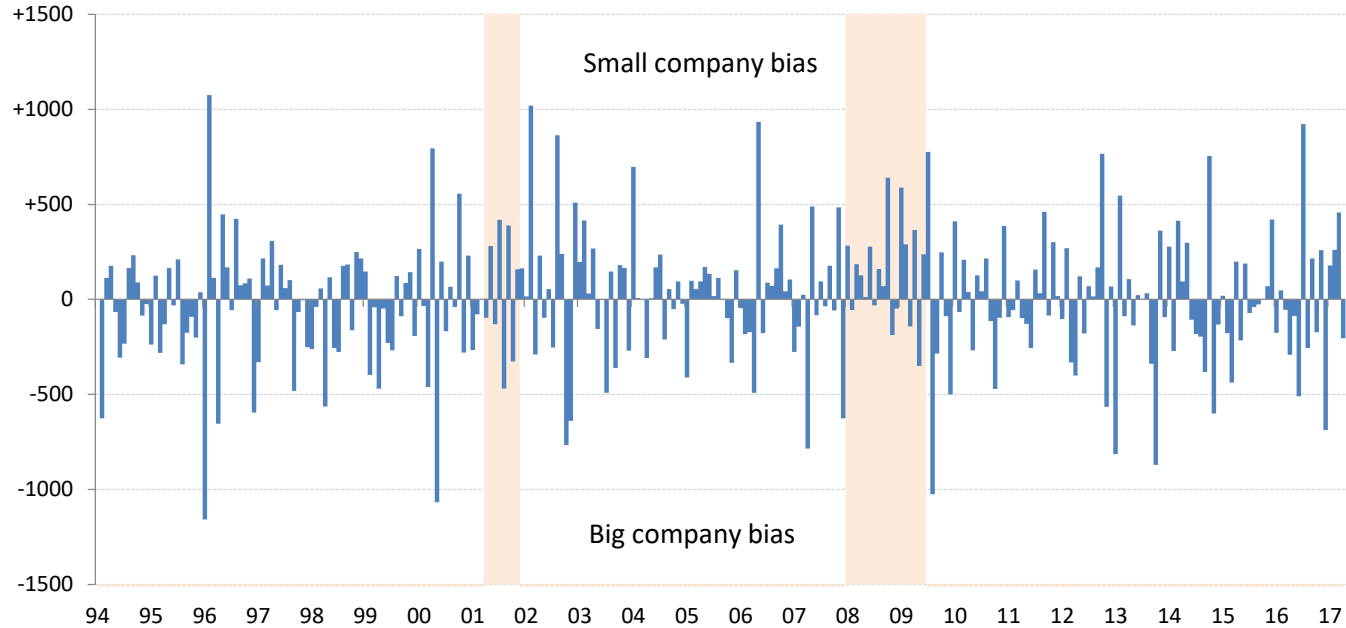
Source: BLS Current Population Survey, TrendMacro calculations

# Aggregate weekly private hours-worked index ■ Recession



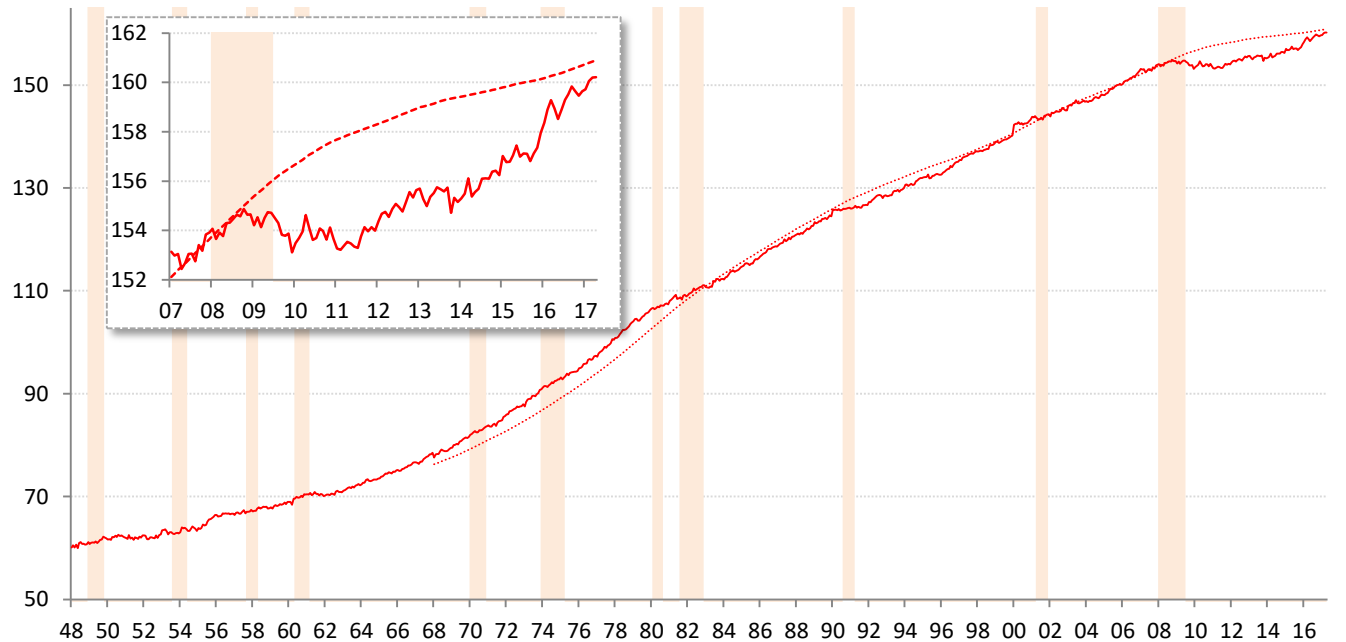
Source: BLS Productivity and Costs (quarterly) and Current Employment Stats (recent monthly), TrendMacro calcs

Difference in employment change: "household" minus "payroll" surveys ■ Recession



Source: BLS Current Population Survey and Current Employment Statistics, TrendMacro calculations

Civilian labor force versus 20-year trend, millions ■ Recession



Source: BLS Current Population Survey, TrendMacro calculations