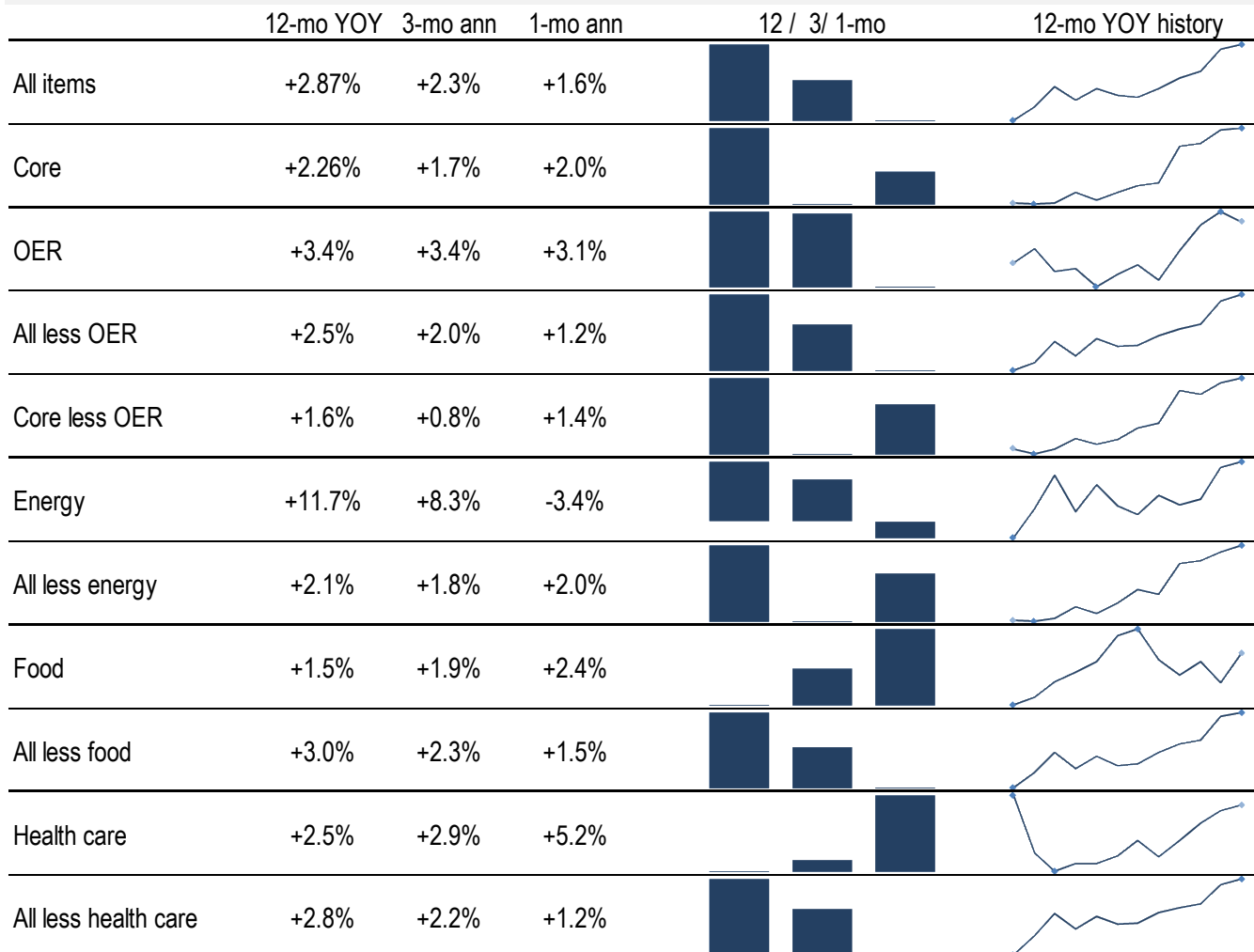


Data Insights: Consumer Price Index, Producer Price Index

Thursday, July 12, 2018

Today's CPI data: what you need to know

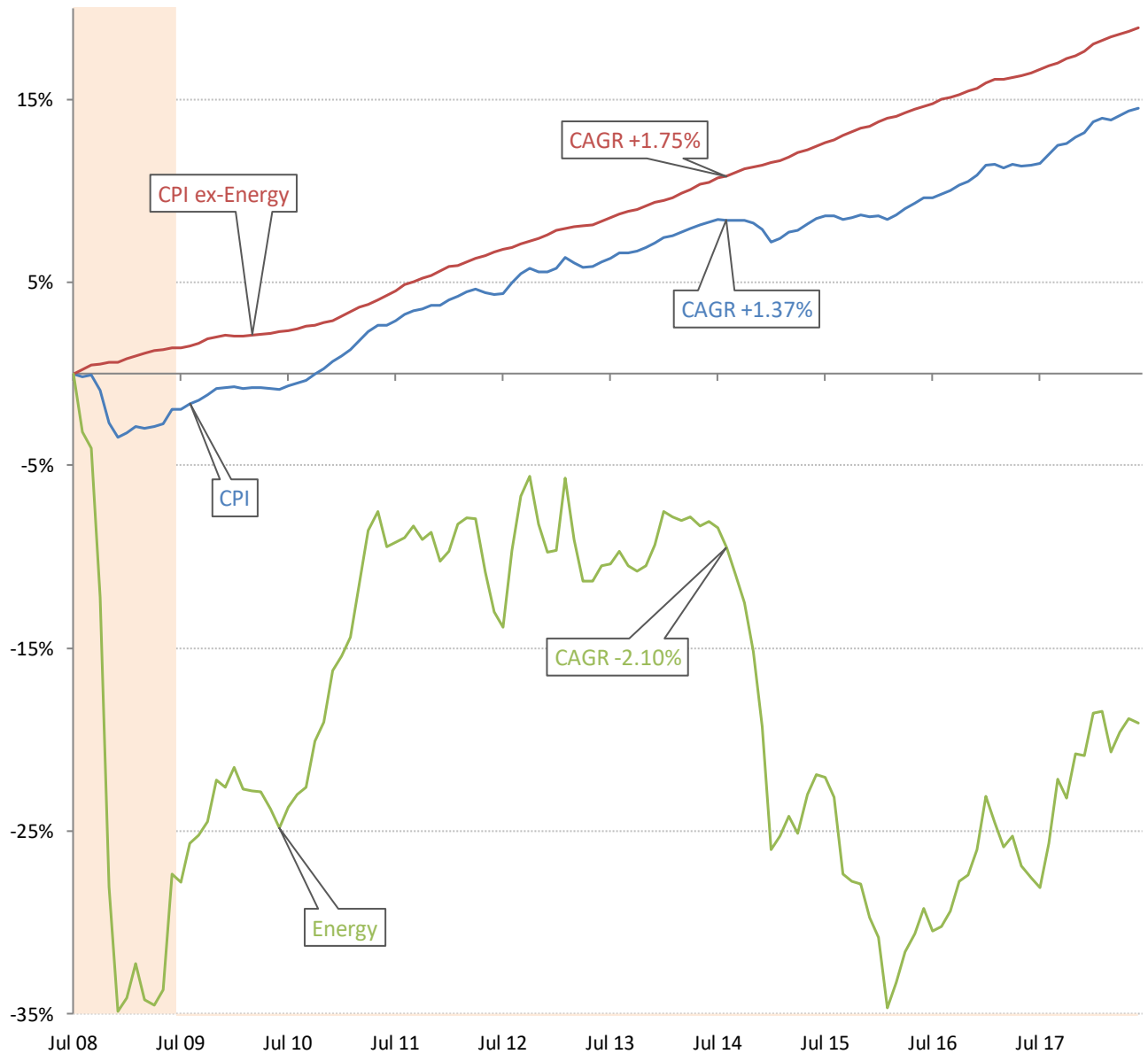


Source: BLS Consumer Price Index, TrendMacro calculations

For more information contact us:

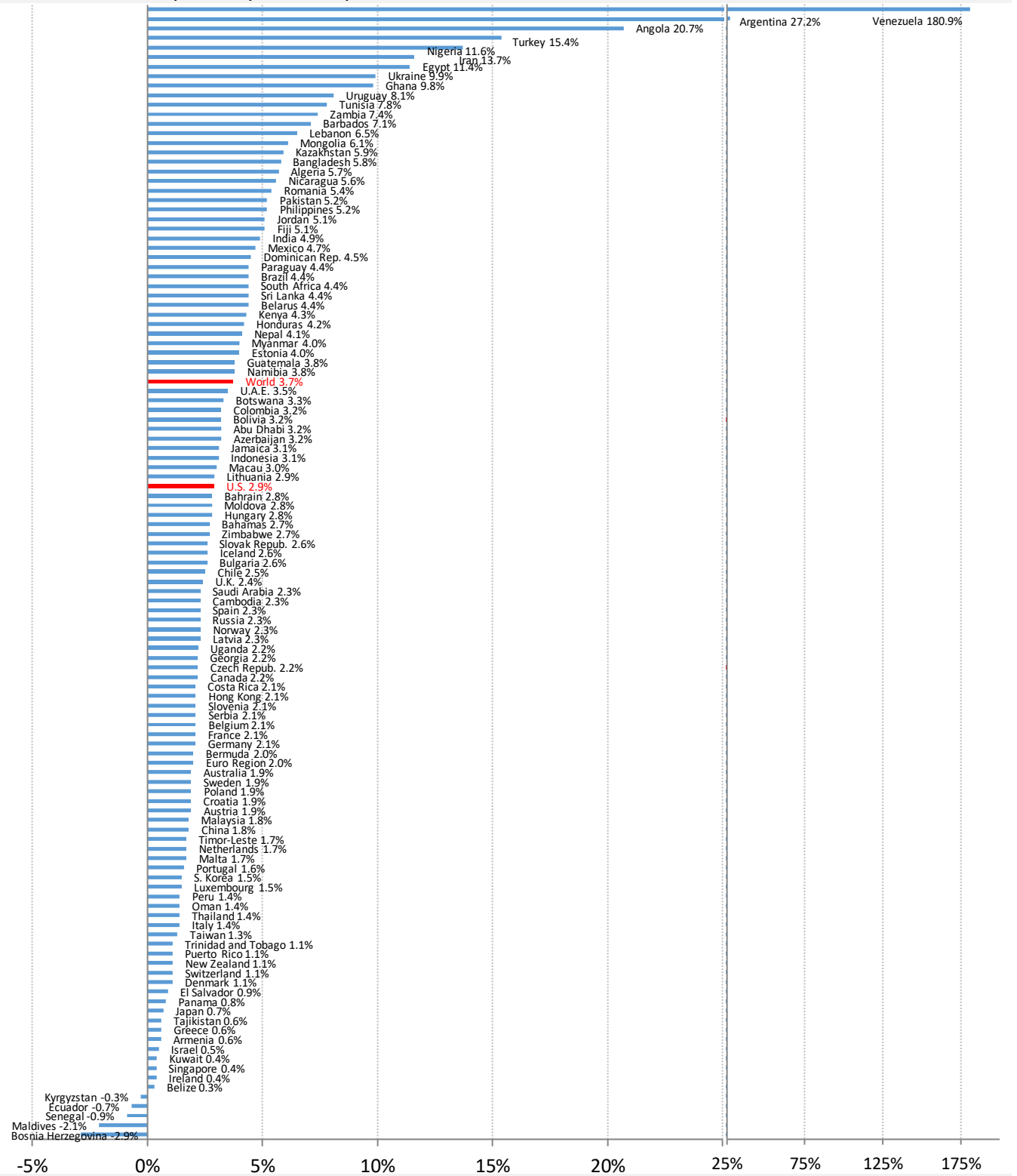
Donald Luskin: 312 273 6766 don@trendmacro.com
 Thomas Demas: 704 552 3625 tdemas@trendmacro.com

The deflation delusion: it's all about oil, and always has been
Cumulative growth of CPI from July 2008, the all-time high oil price



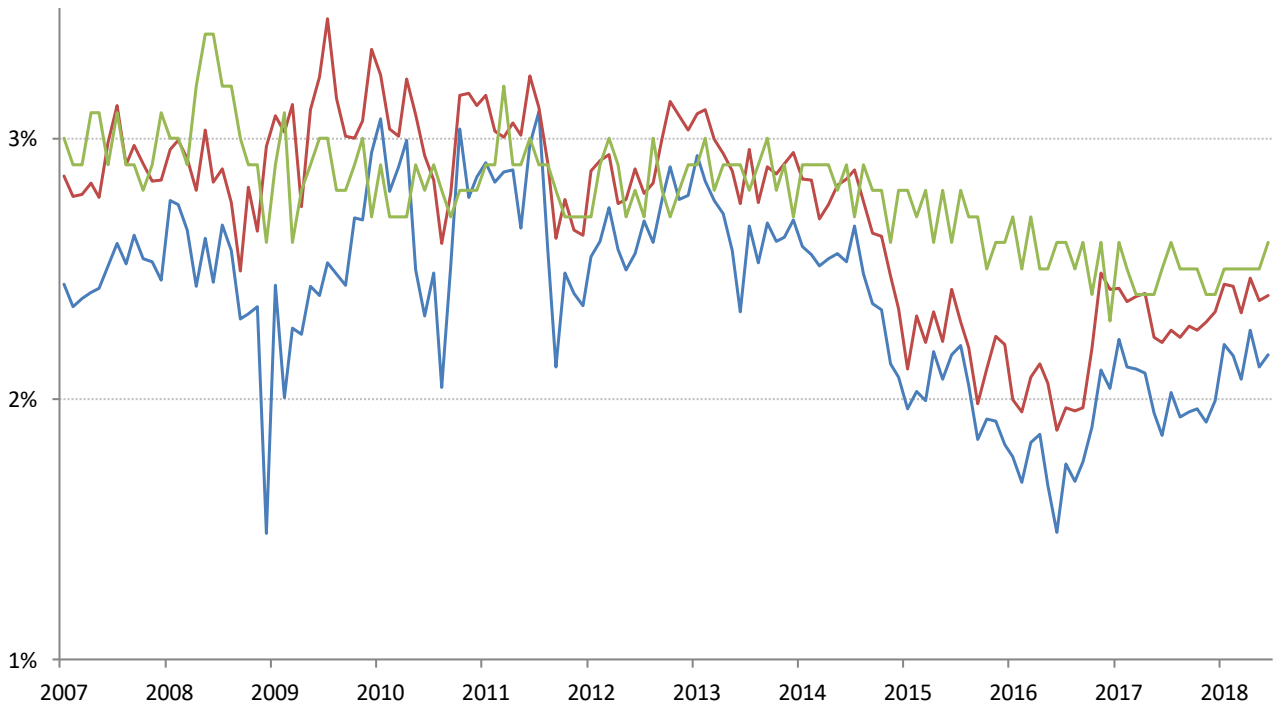
Source: Bloomberg, TrendMacro calculations

World round-up: CPI year-on-year



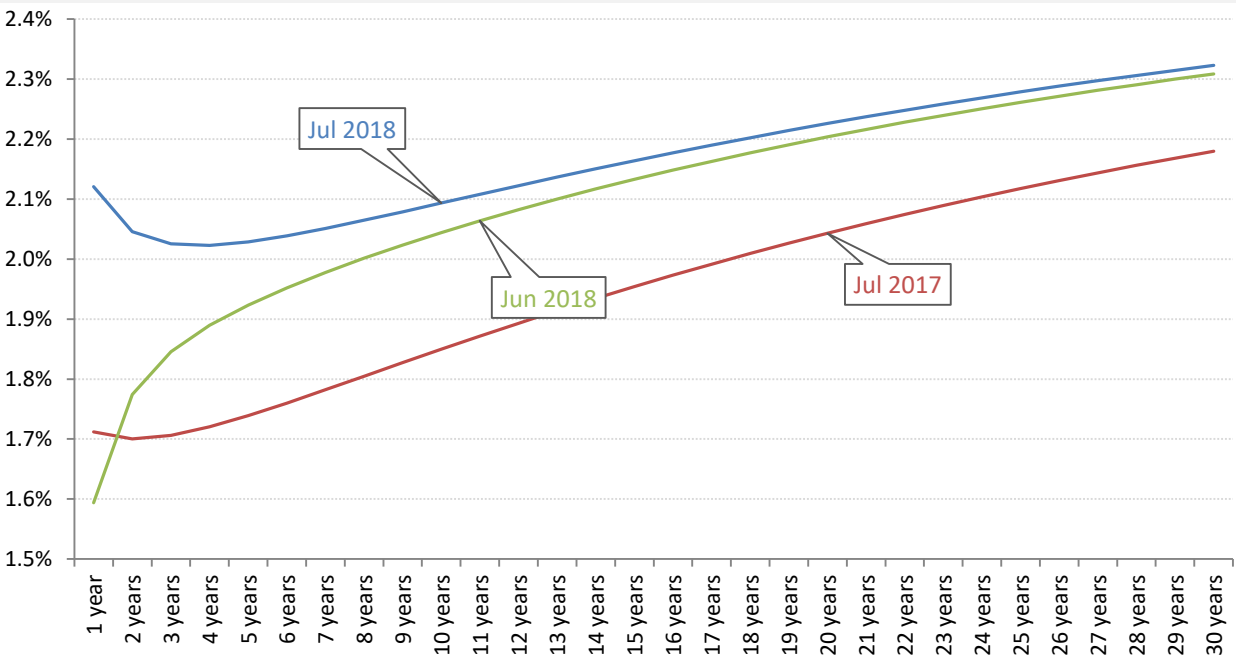
Source: Bloomberg, TrendMacro calculations

Implied 5-year inflation, 5 years forward — TIPS — Swaps — U. Michigan Survey



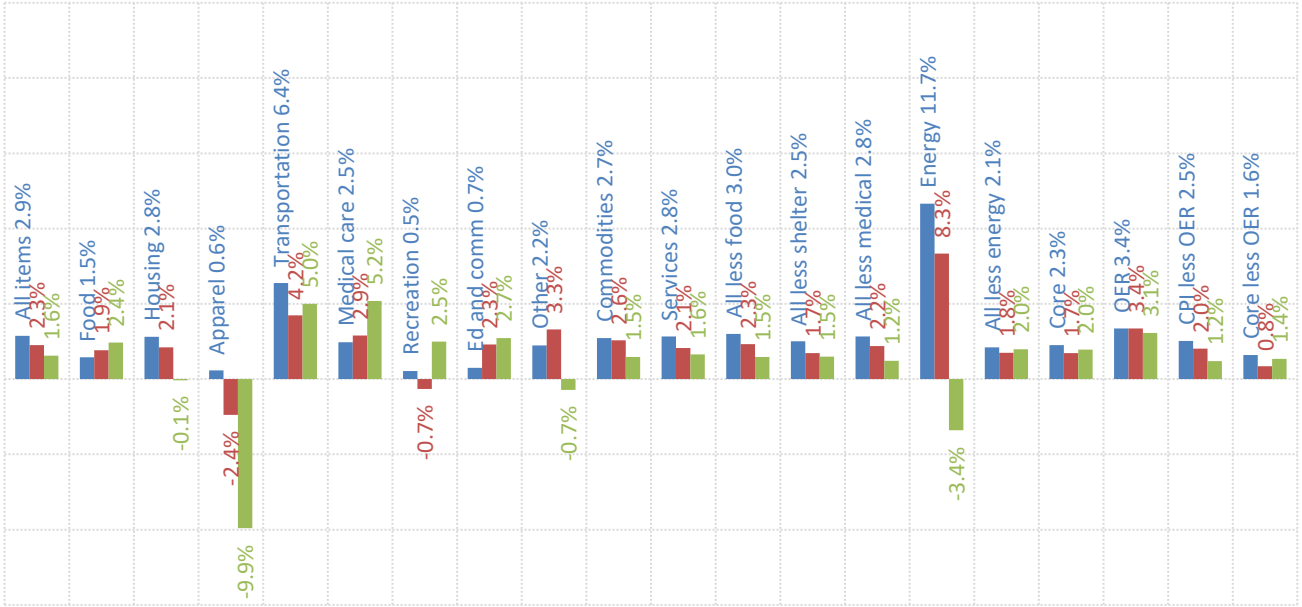
Source: Bloomberg, TrendMacro calculations

Swap-implied inflation yield curve, per annum



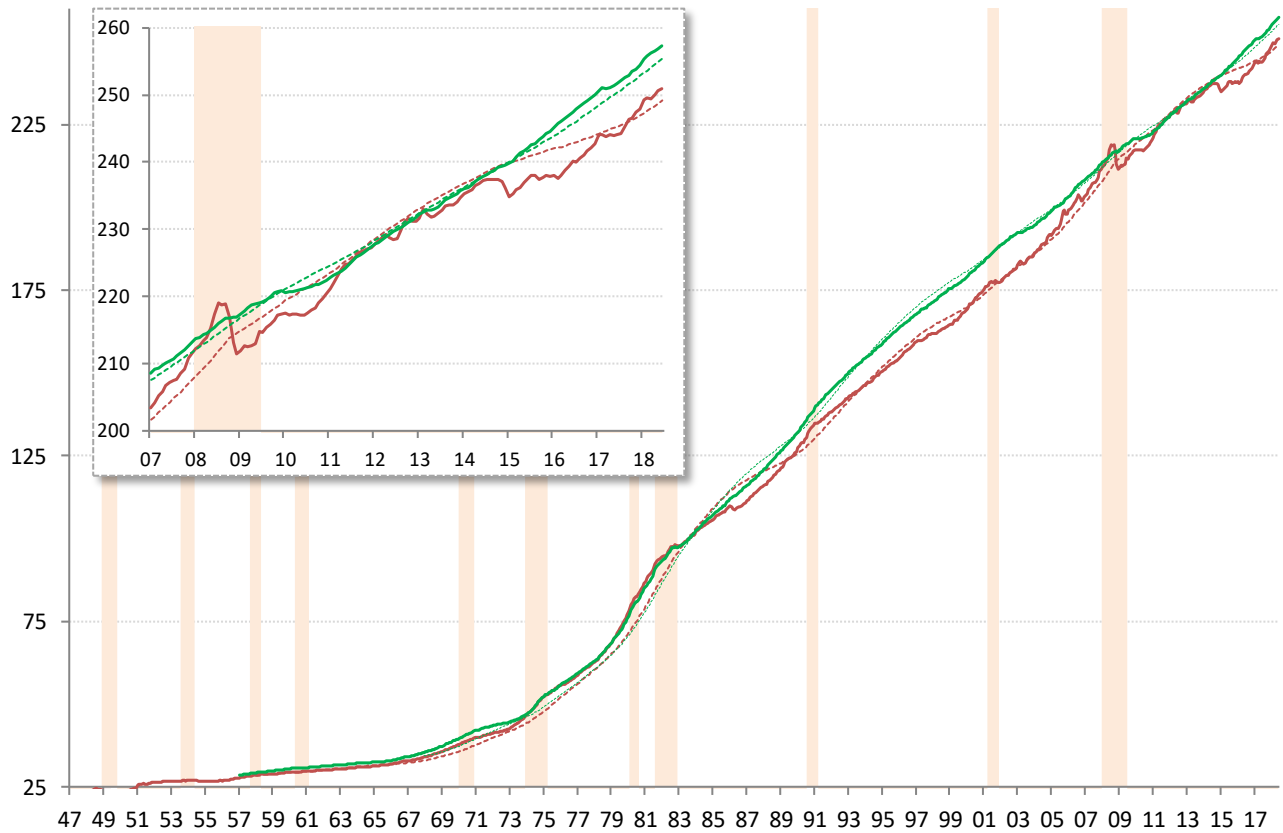
Source: Cleveland Fed, TrendMacro calculations

US CPI inflation by sector (SAAR) ■ 12-month ■ 3-month ■ 1-month



Source: BLS Consumer Price Index, TrendMacro calculations

US CPI Core — Level ... 20-year trend ■ Recession



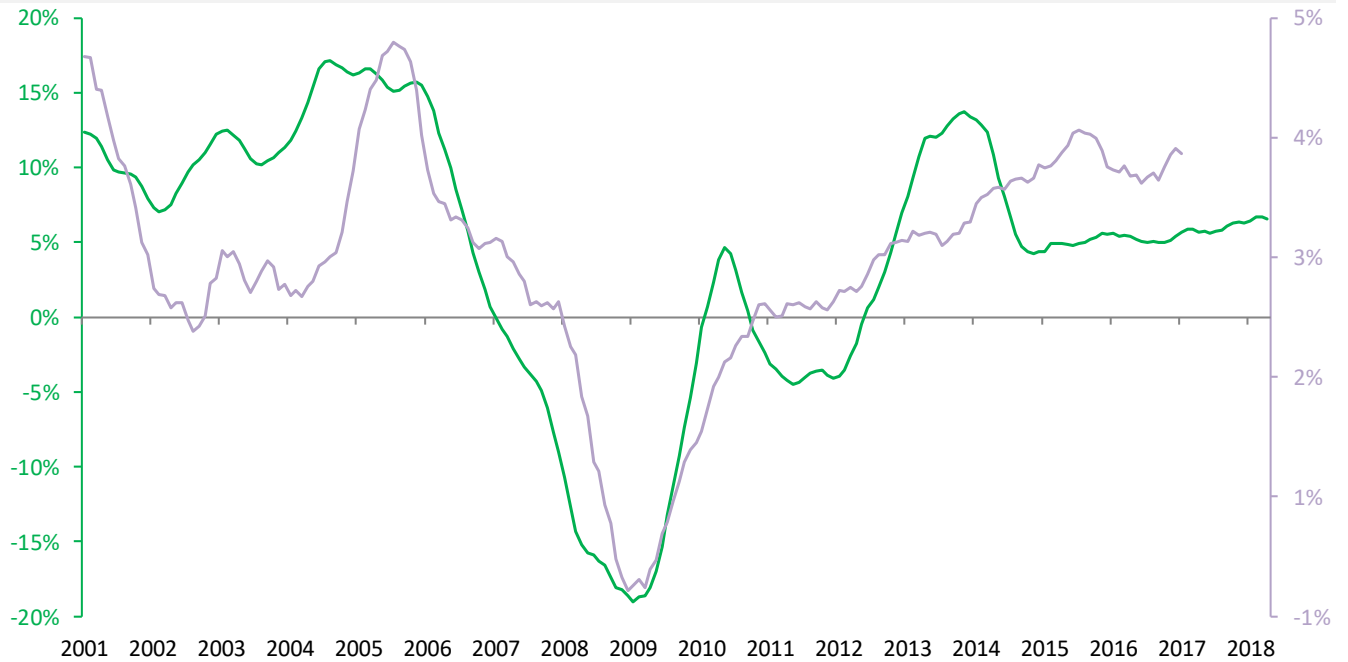
Source: BLS Consumer Price Index, TrendMacro calculations

Housing leads US CPI

Year-over-year change

— Case Shiller 20-city avg

— Owner's equivalent rent CPI component, 18-mo lag



Source: BLS, Standard & Poor's Case Shiller, TrendMacro calculations

The world is flat: the vanishing Phillips Curve

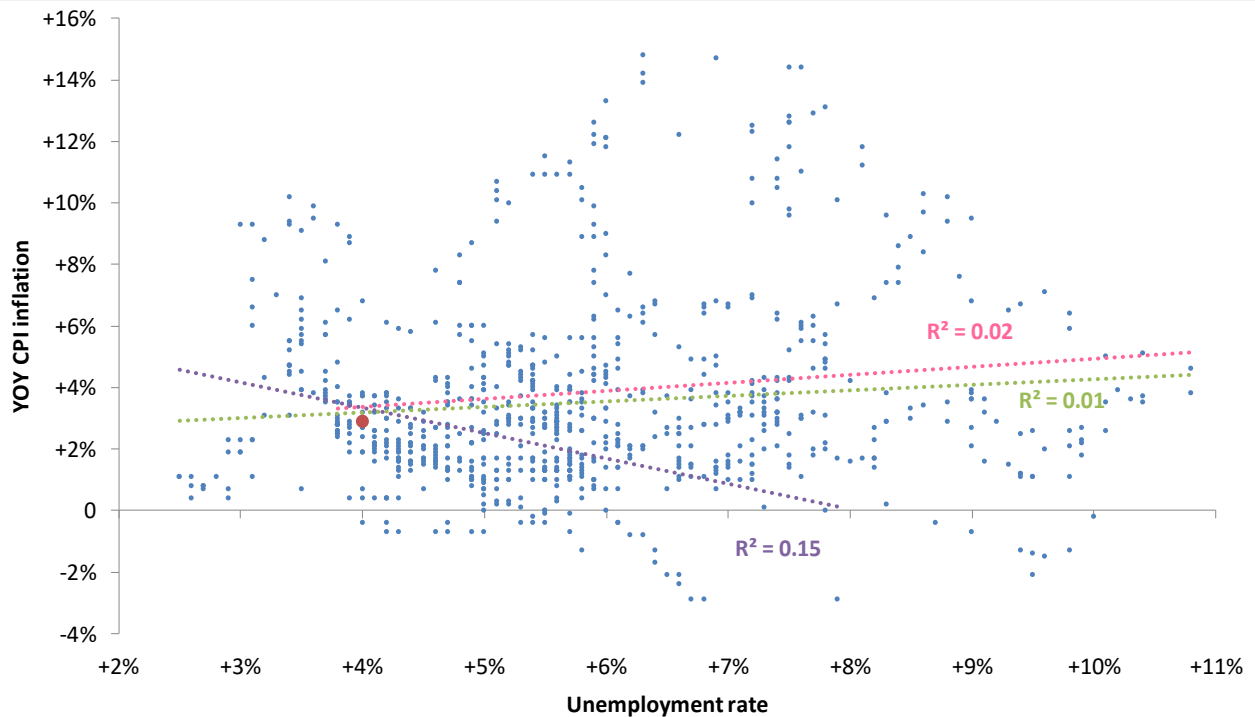
● Latest

Linear trend: ...

Pre-74

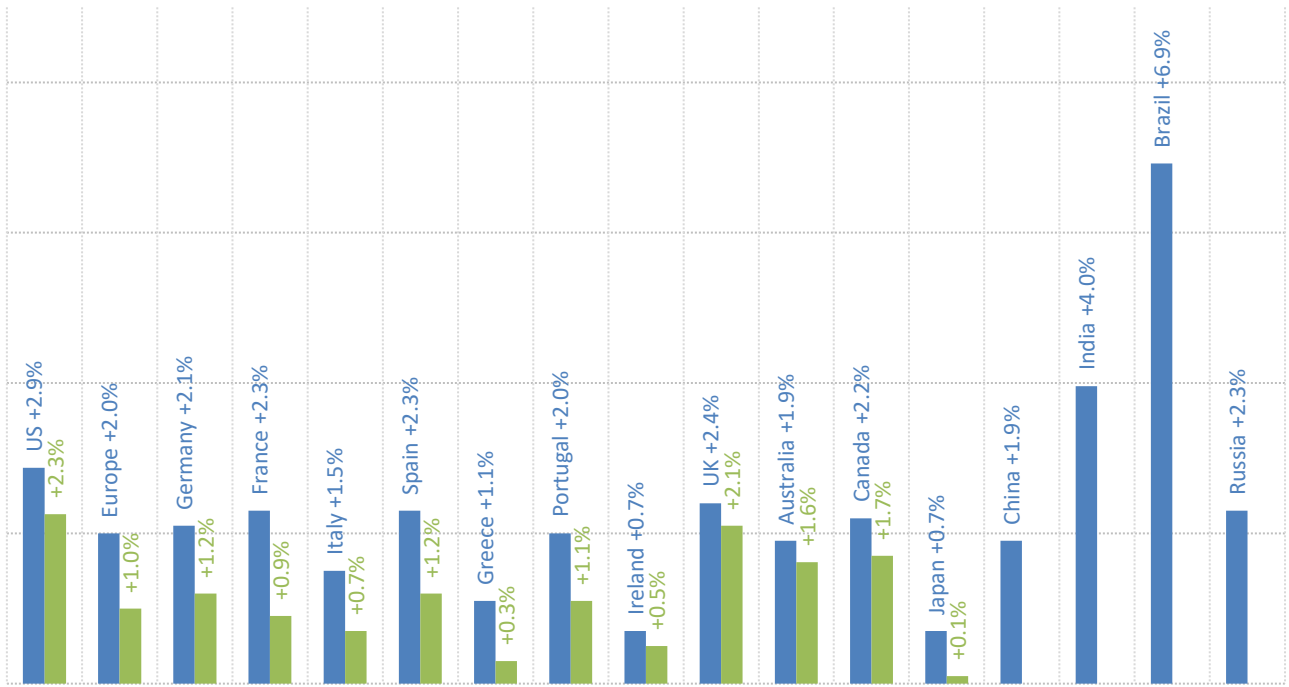
Post-74

All



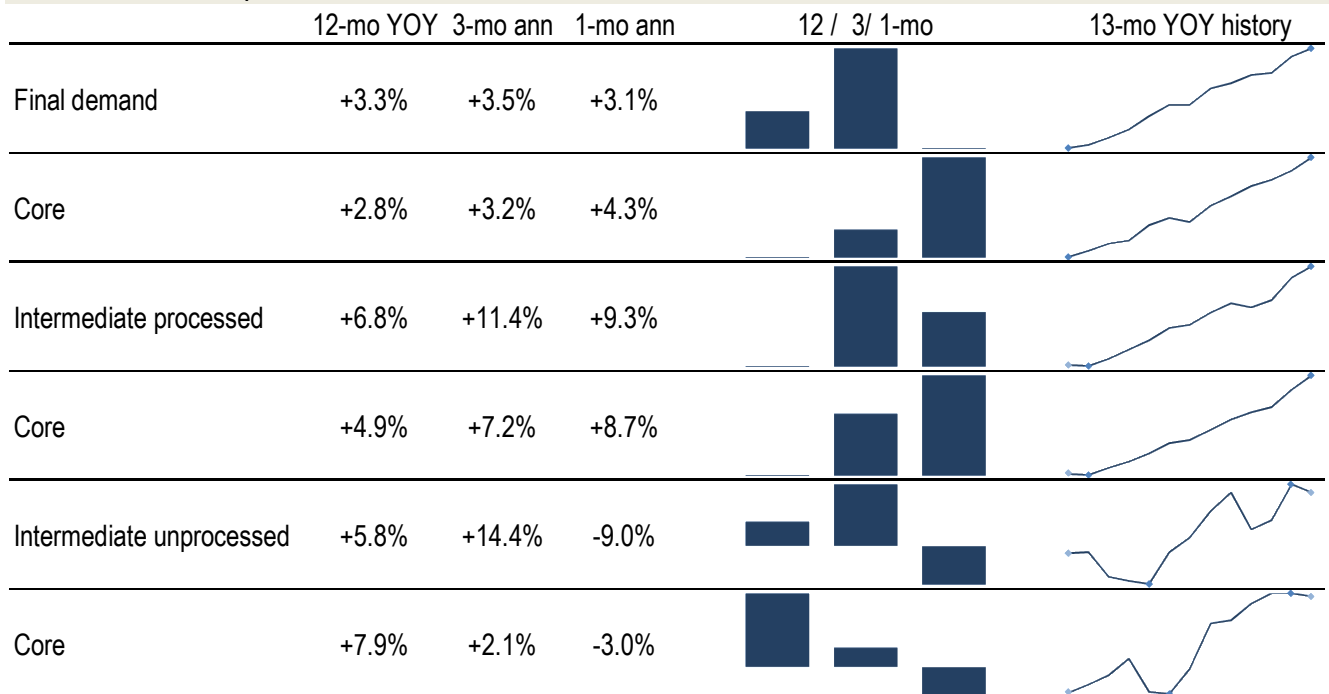
Source: BLS Consumer Price Index, Current Population Survey

Major economies CPI, year on year



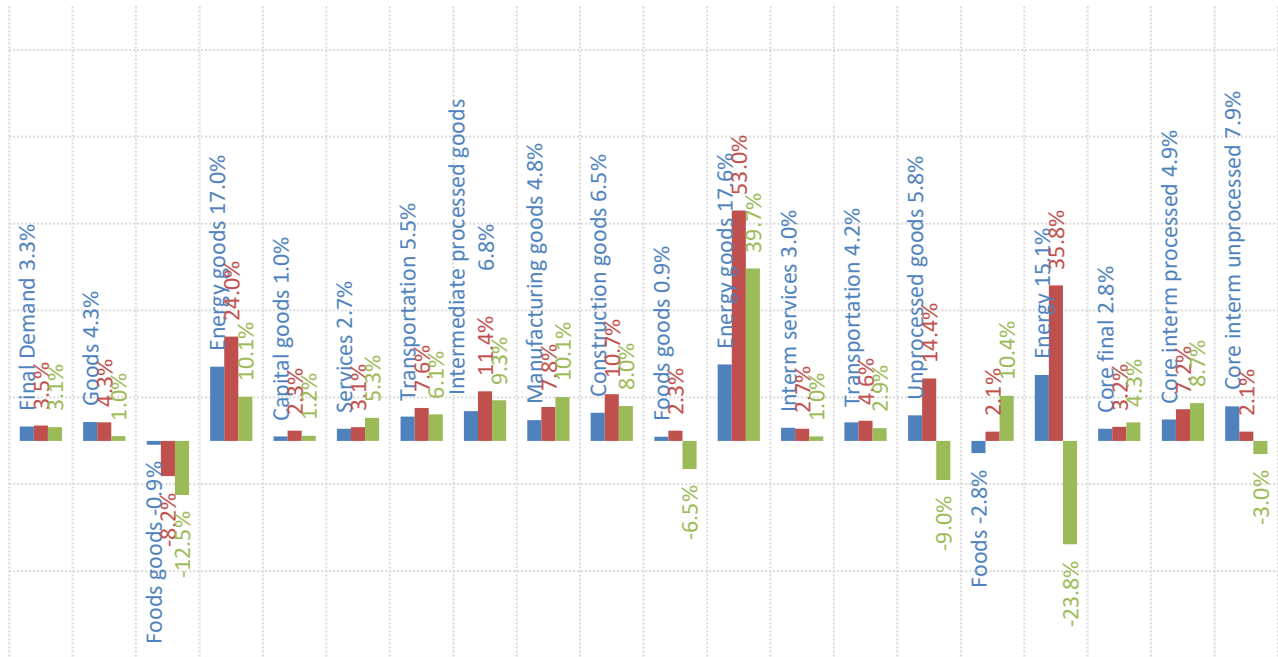
Source: Respective Statistical agencies, TrendMacro calculations

PPI data: what you need to know



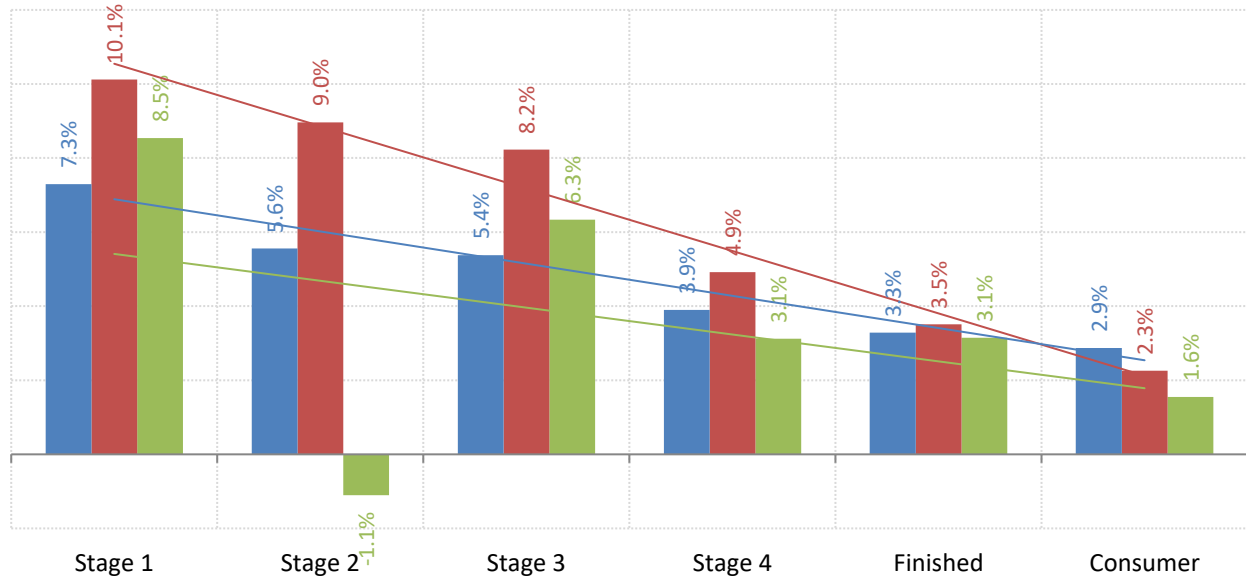
Source: BLS Producer Price Index, TrendMacro calculations

PPI inflation by sector (SAAR) ■ 12-mo ■ 3-mo ■ 1-mo



Source: BLS Producer Price Index, TrendMacro calculations

The inflation pipeline (SAAR) ■ 12-mo ■ 3-mo ■ 1-mo



Source: BLS Producer Price Index and Consumer Price Index, TrendMacro calculations