

## Data Insights: Consumer Price Index, Producer Price Index

Wednesday, February 14, 2018

### Today's CPI data: what you need to know

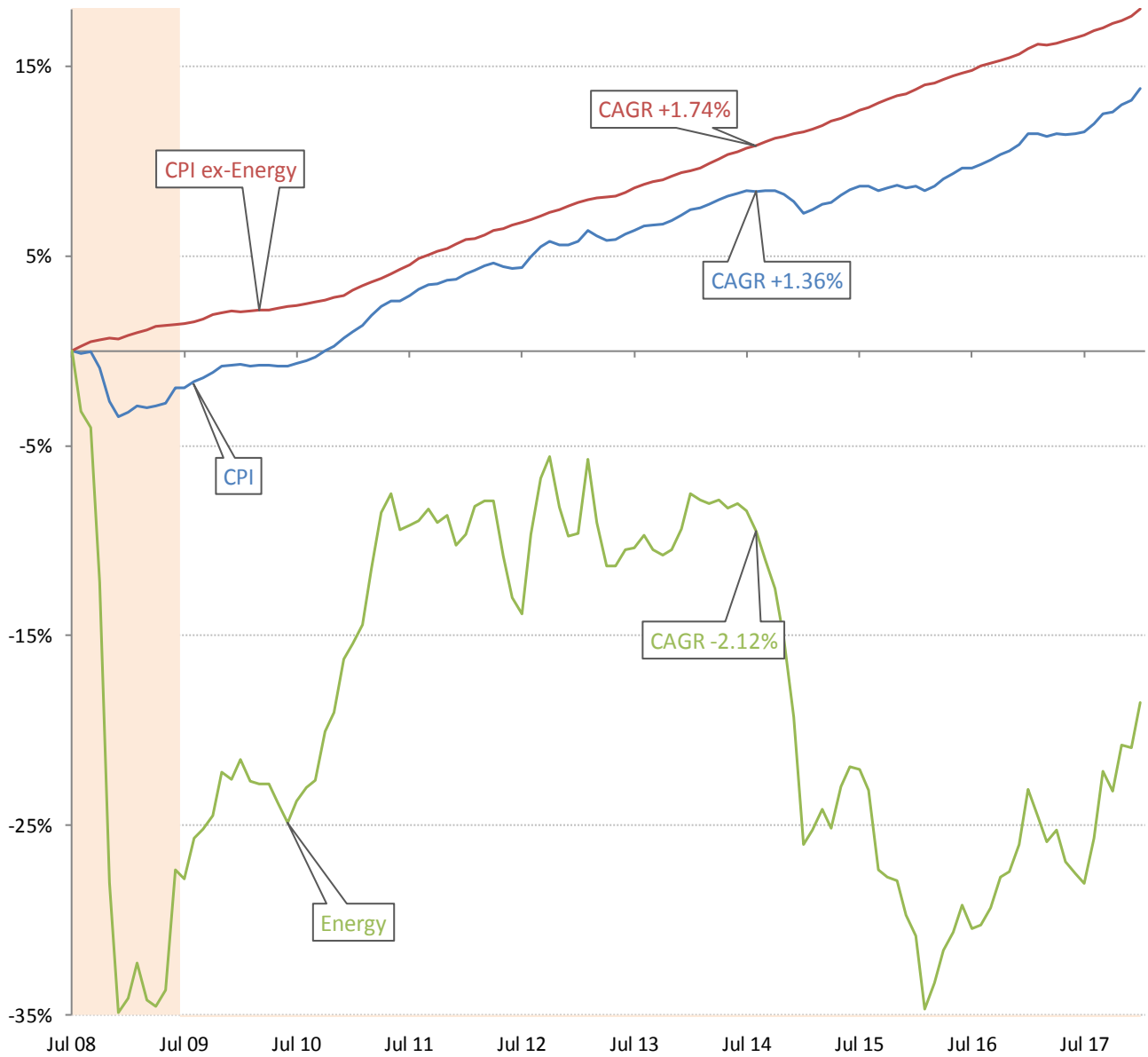
	12-mo YOY	3-mo ann	1-mo ann	12 / 3 / 1-mo	12-mo YOY history
All items	+2.07%	+4.4%	+6.7%		
Core	+1.82%	+2.9%	+4.3%		
OER	+3.2%	+3.4%	+3.4%		
All less OER	+1.9%	+4.2%	+6.6%		
Core less OER	+1.1%	+2.6%	+4.8%		
Energy	+5.9%	+26.6%	+42.3%		
All less energy	+1.8%	+2.7%	+4.0%		
Food	+1.6%	+1.6%	+2.2%		
All less food	+2.2%	+4.8%	+7.3%		
Health care	+2.0%	+3.2%	+5.1%		
All less health care	+2.2%	+4.5%	+6.8%		

Source: BLS Consumer Price Index, TrendMacro calculations

#### For more information contact us:

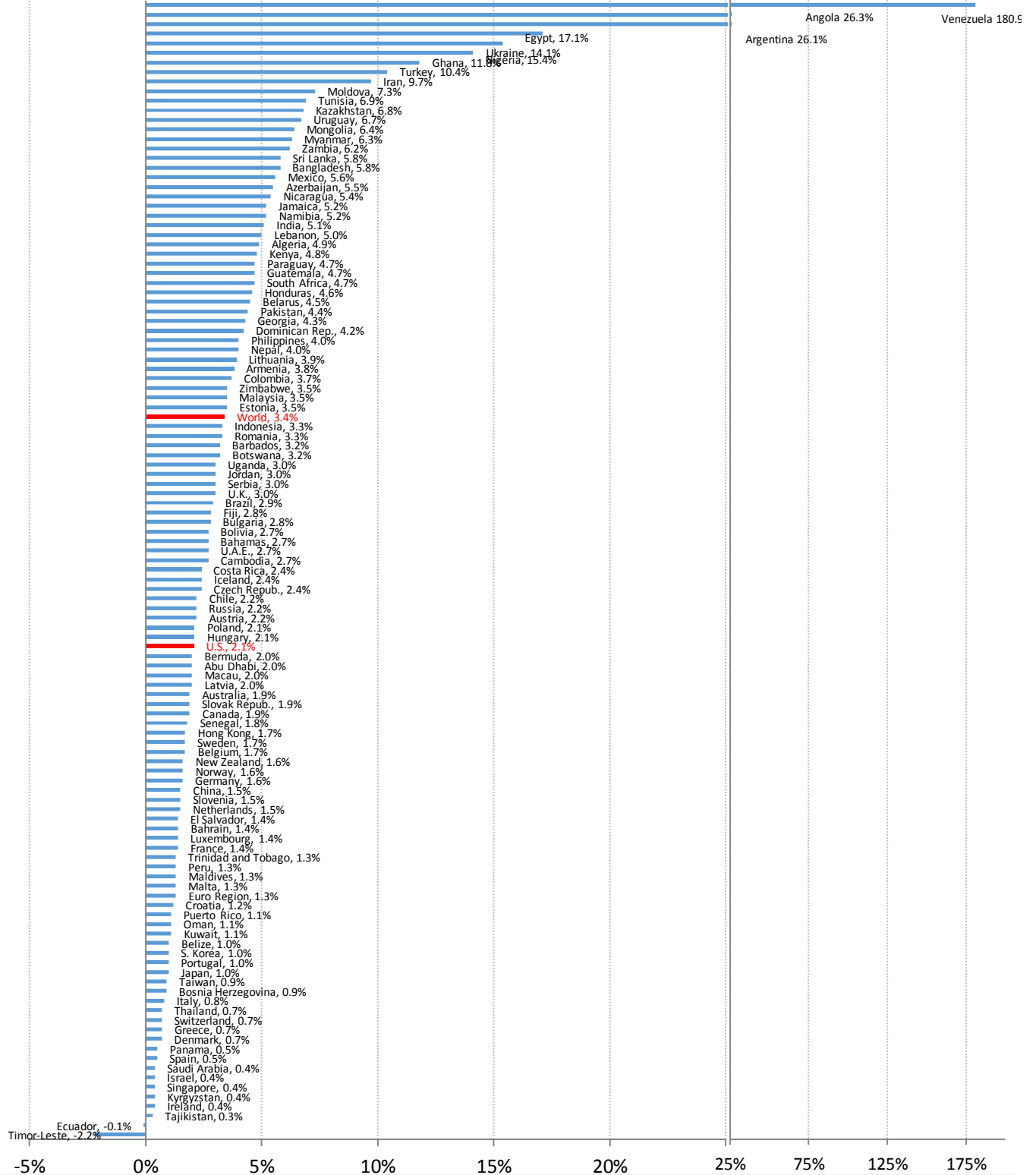
Donald Luskin: 312 273 6766 [don@trendmacro.com](mailto:don@trendmacro.com)  
 Thomas Demas: 704 552 3625 [tdemas@trendmacro.com](mailto:tdemas@trendmacro.com)

The deflation delusion: it's all about oil, and always has been  
Cumulative growth of CPI from July 2008, the all-time high oil price



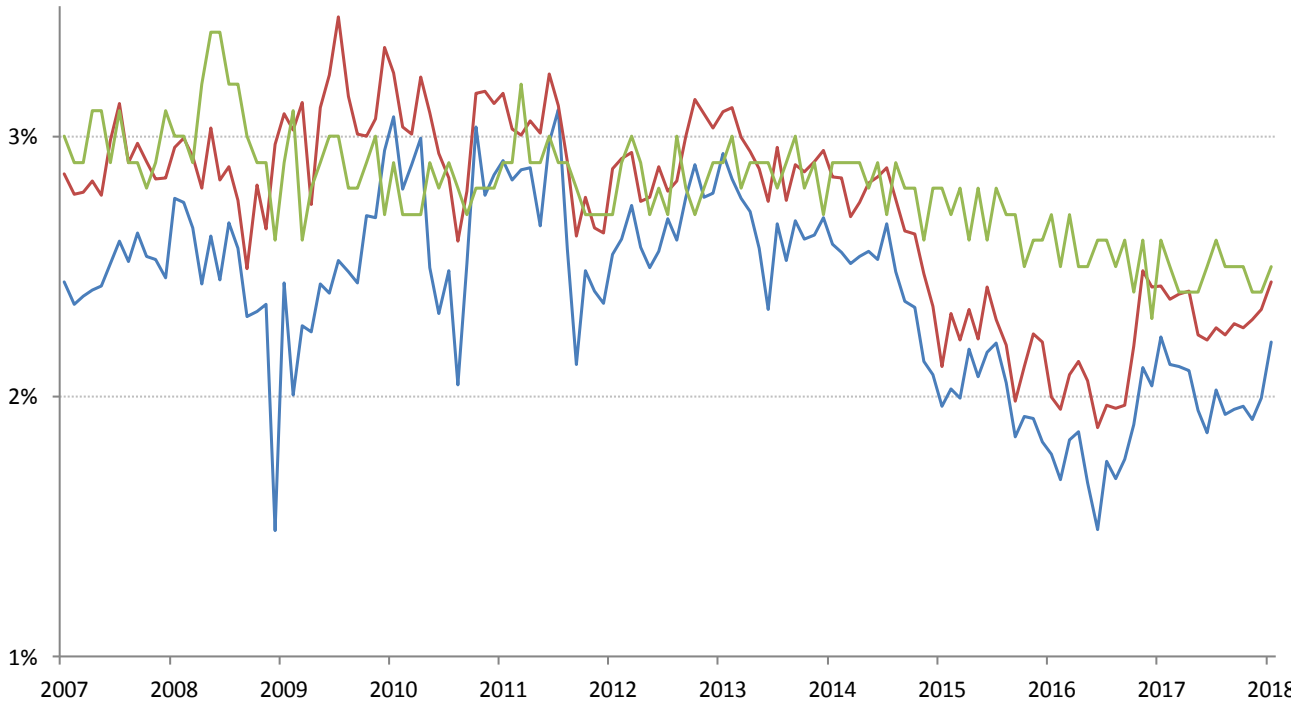
Source: Bloomberg, TrendMacro calculations

# World round-up: CPI year-on-year



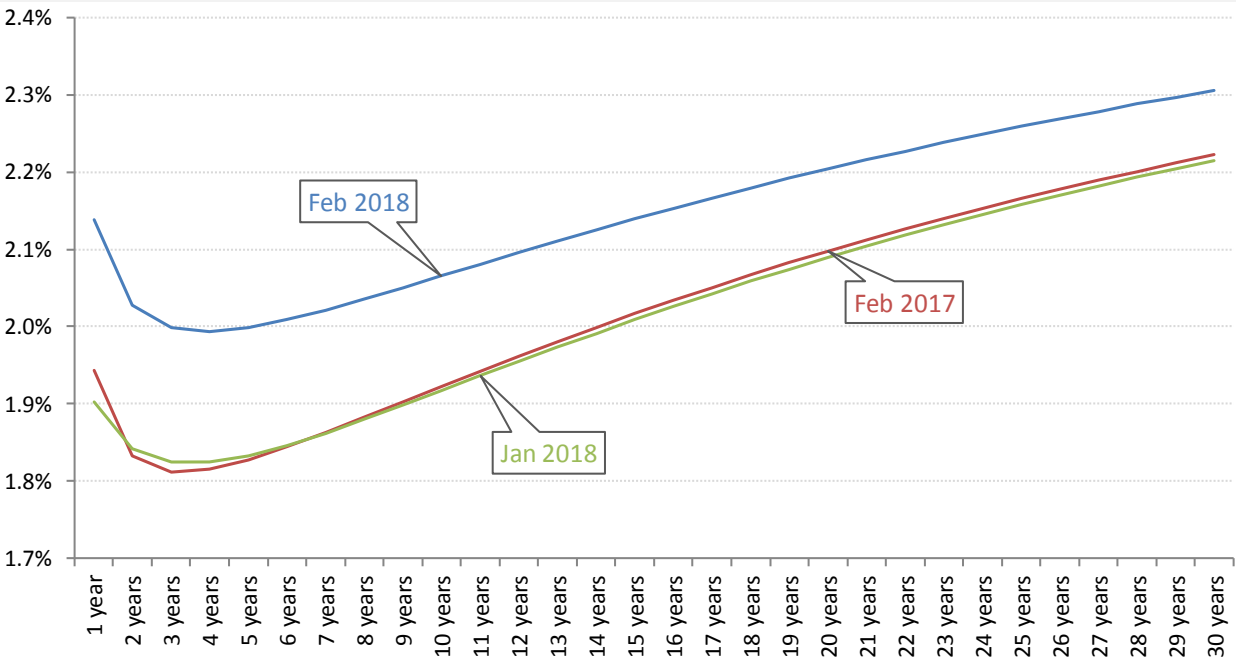
Source: Bloomberg, TrendMacro calculations

Implied 5-year inflation, 5 years forward — TIPS — Swaps — U. Michigan Survey



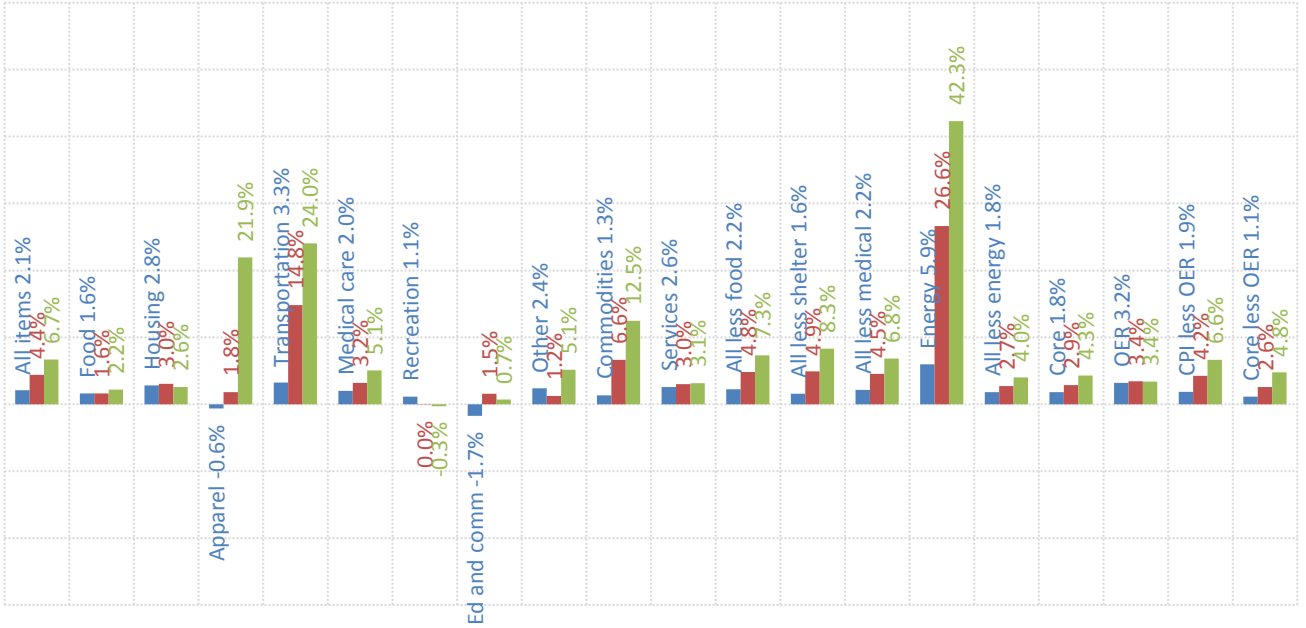
Source: Bloomberg, TrendMacro calculations

Swap-implied inflation yield curve, per annum



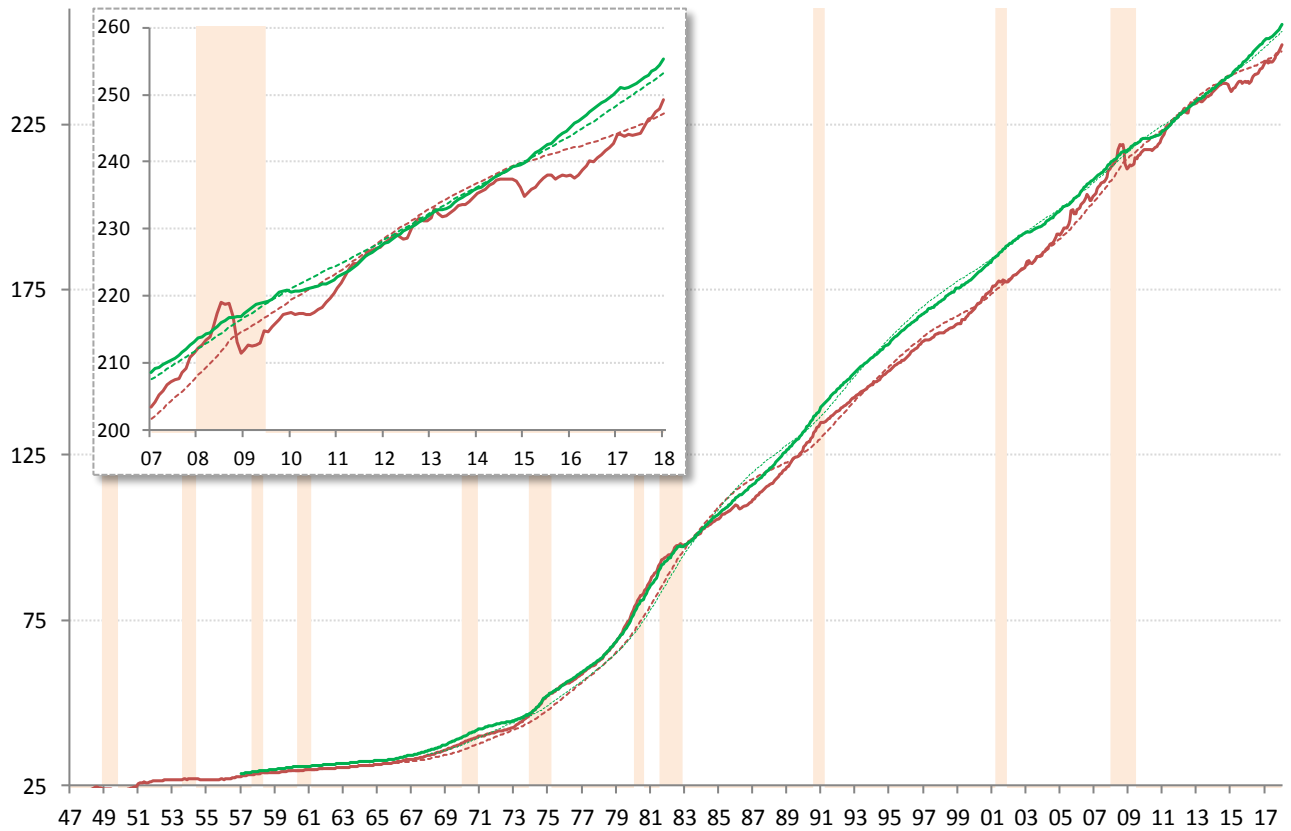
Source: Cleveland Fed, TrendMacro calculations

US CPI inflation by sector (SAAR) ■ 12-month ■ 3-month ■ 1-month



Source: BLS Consumer Price Index, TrendMacro calculations

US CPI Core — Level ... 20-year trend ■ Recession



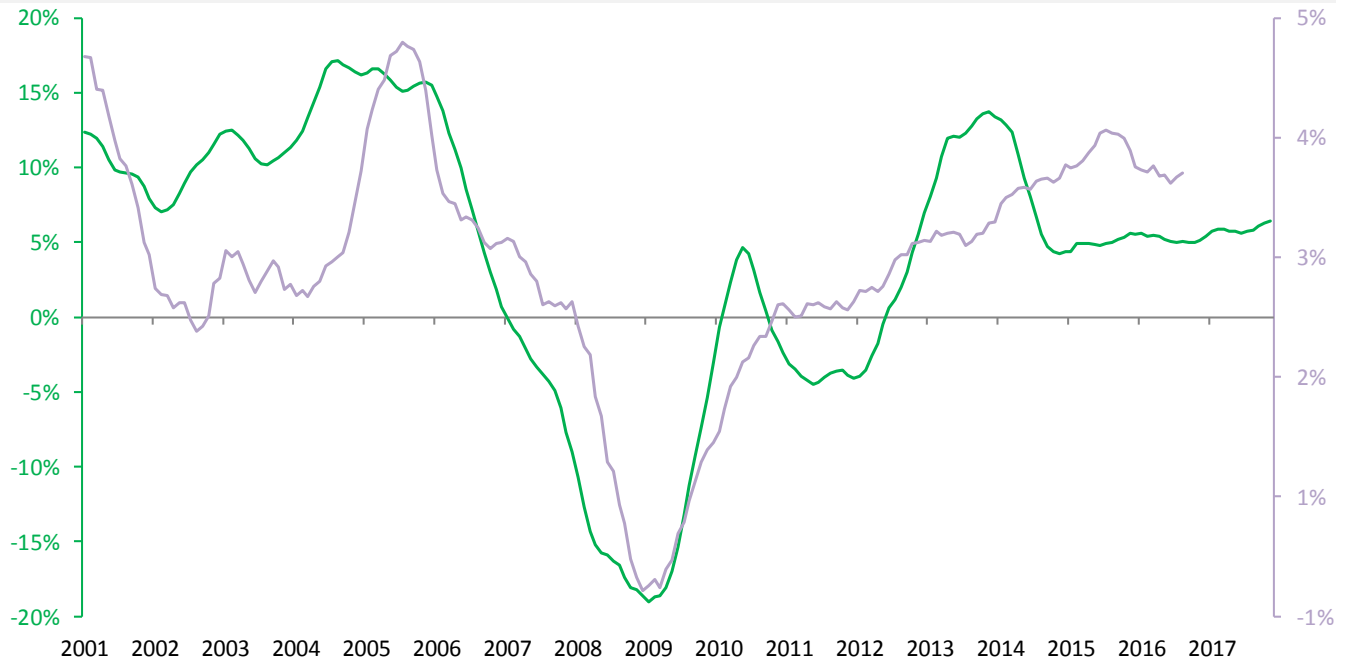
Source: BLS Consumer Price Index, TrendMacro calculations

## Housing leads US CPI

Year-over-year change

— Case Shiller 20-city avg

— Owner's equivalent rent CPI component, 18-mo lag



Source: BLS, Standard & Poor's Case Shiller, TrendMacro calculations

## The world is flat: the vanishing Phillips Curve

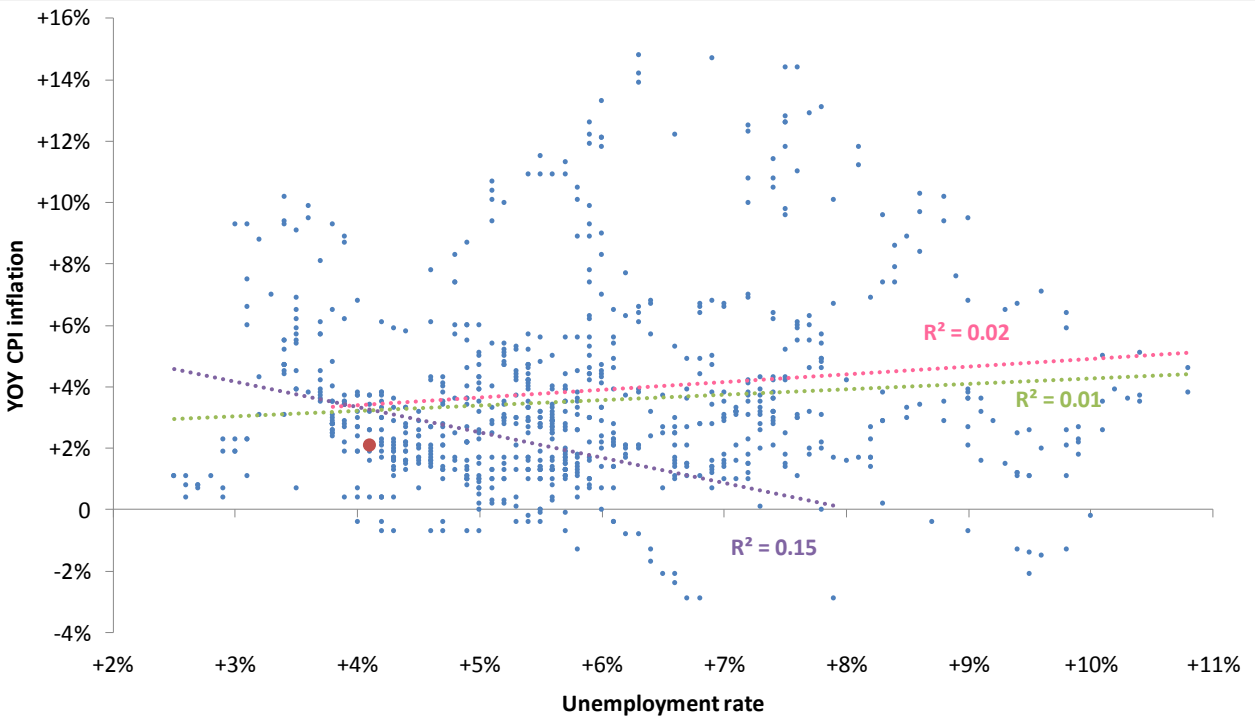
● Latest

Linear trend: ●

Pre-74

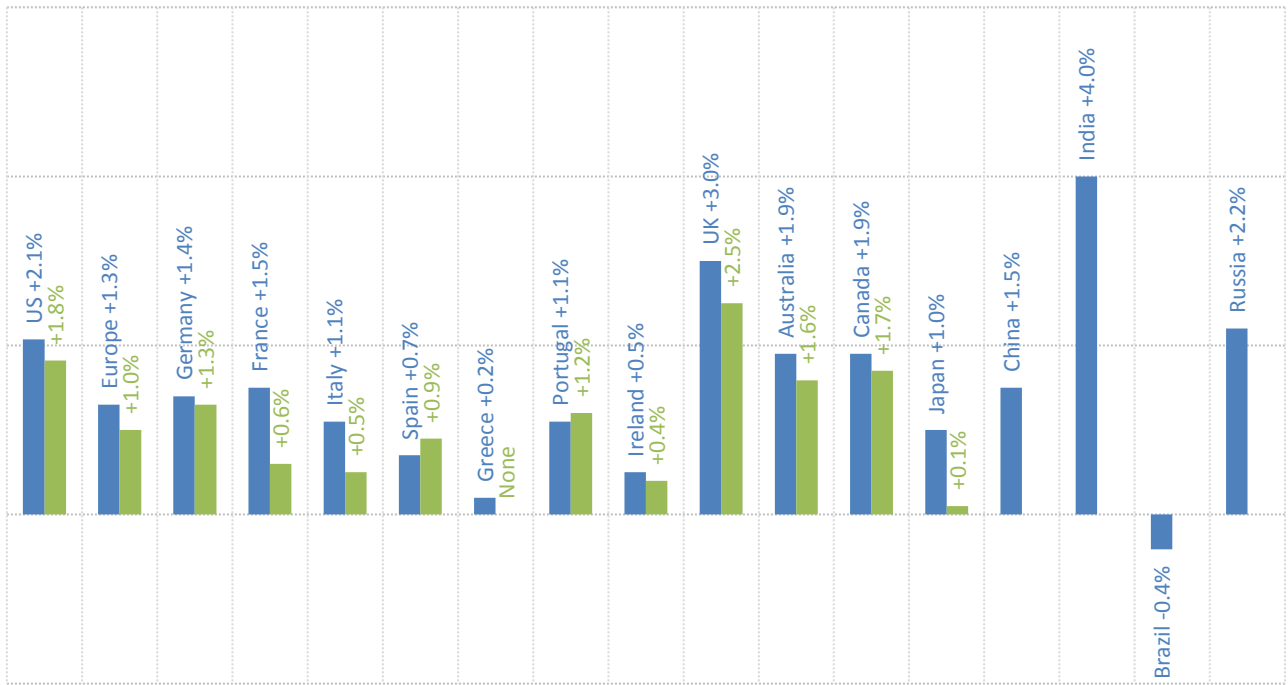
Post-74

All



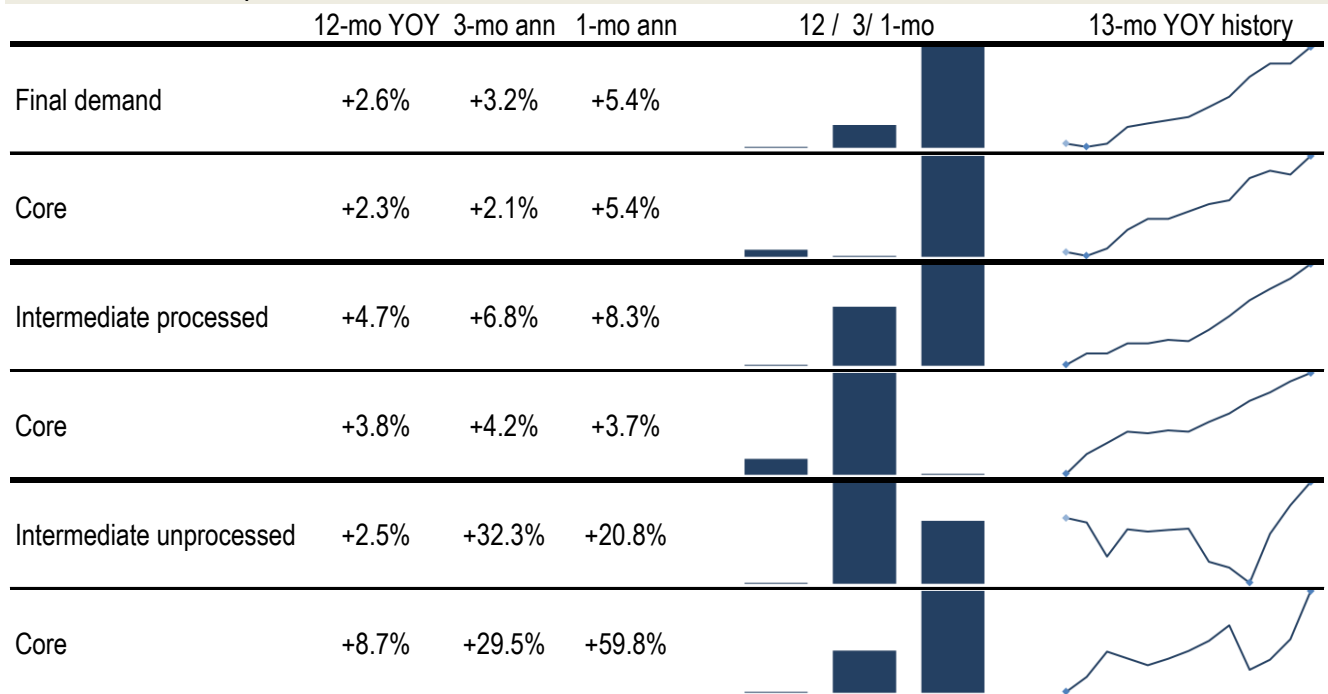
Source: BLS Consumer Price Index, Current Population Survey

## Major economies CPI, year on year



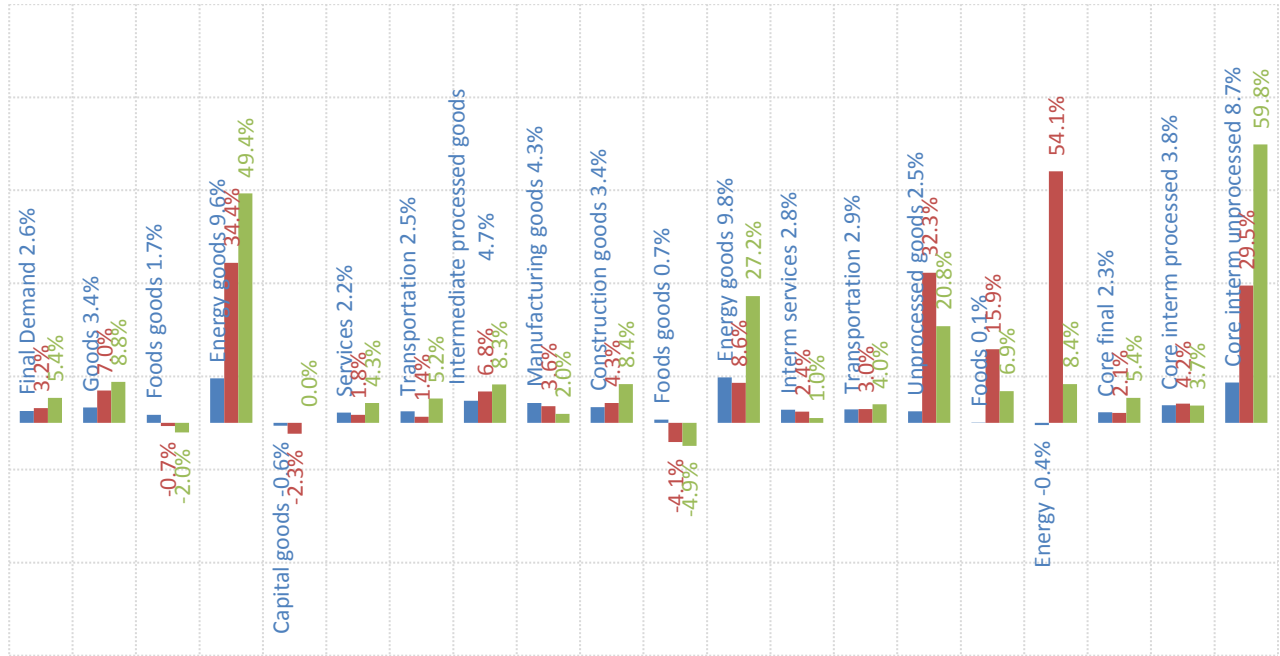
Source: Respective Statistical agencies, TrendMacro calculations

## PPI data: what you need to know



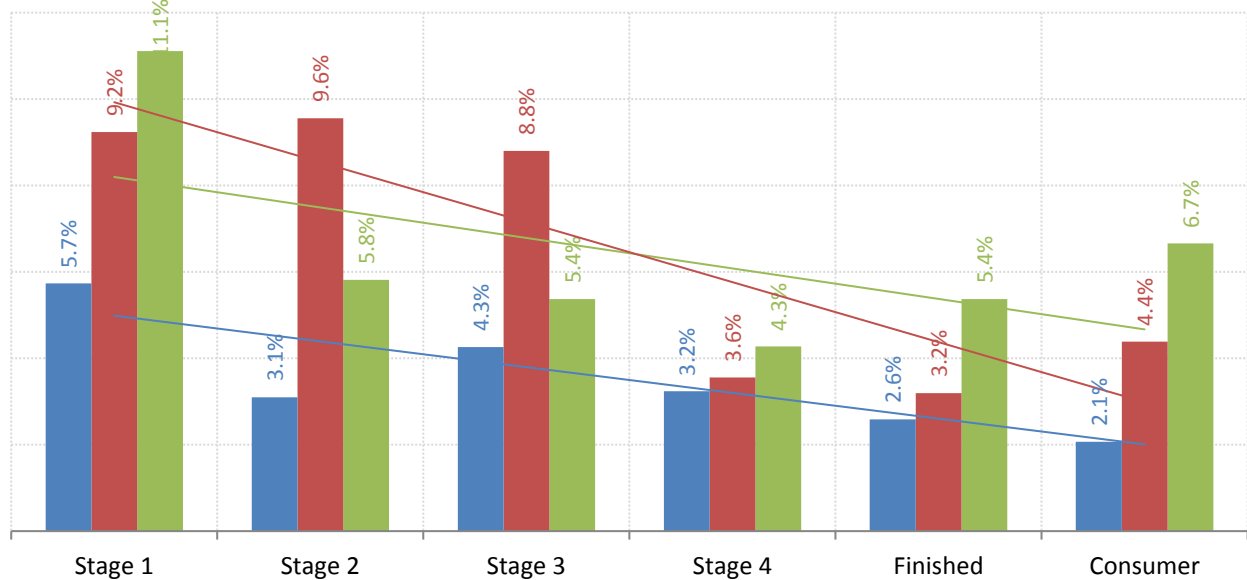
Source: BLS Producer Price Index, TrendMacro calculations

PPI inflation by sector (SAAR) ■ 12-mo ■ 3-mo ■ 1-mo



Source: BLS Producer Price Index, TrendMacro calculations

The inflation pipeline (SAAR) ■ 12-mo ■ 3-mo ■ 1-mo



Source: BLS Producer Price Index and Consumer Price Index, TrendMacro calculations