

Data Insights: Consumer Price Index, Producer Price Index

Thursday, November 17, 2016

Today's CPI data: what you need to know

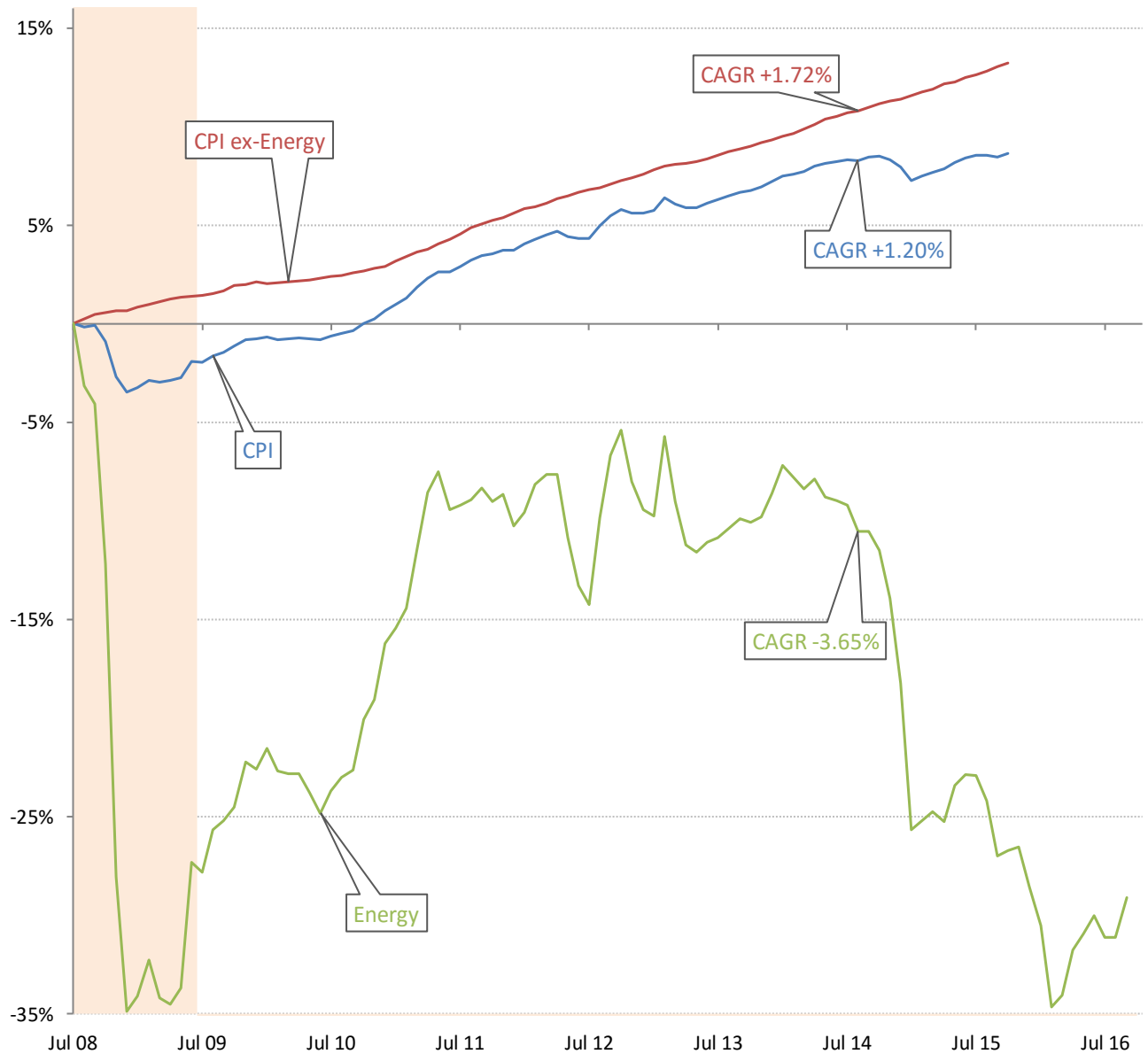
	12-mo YOY	3-mo ann	1-mo ann	12 / 3 / 1-mo	12-mo YOY history
All items	+1.64%	+3.5%	+4.4%		
Core	+2.2%	+2.1%	+1.8%		
OER	+3.4%	+3.8%	+3.7%		
All less OER	+1.3%	+3.7%	+4.2%		
Core less OER	+1.4%	+1.1%	+0.7%		
Energy	+0.1%	+28.7%	+50.7%		
All less energy	+1.8%	+1.8%	+1.5%		
Food	-0.3%	+0.1%	-0.1%		
All less food	+2.0%	+4.0%	+5.1%		
Health care	+4.3%	+4.9%	+0.2%		
All less health care	+1.4%	+3.3%	+4.8%		

Source: BLS Consumer Price Index, TrendMacro calculations

For more information contact us:

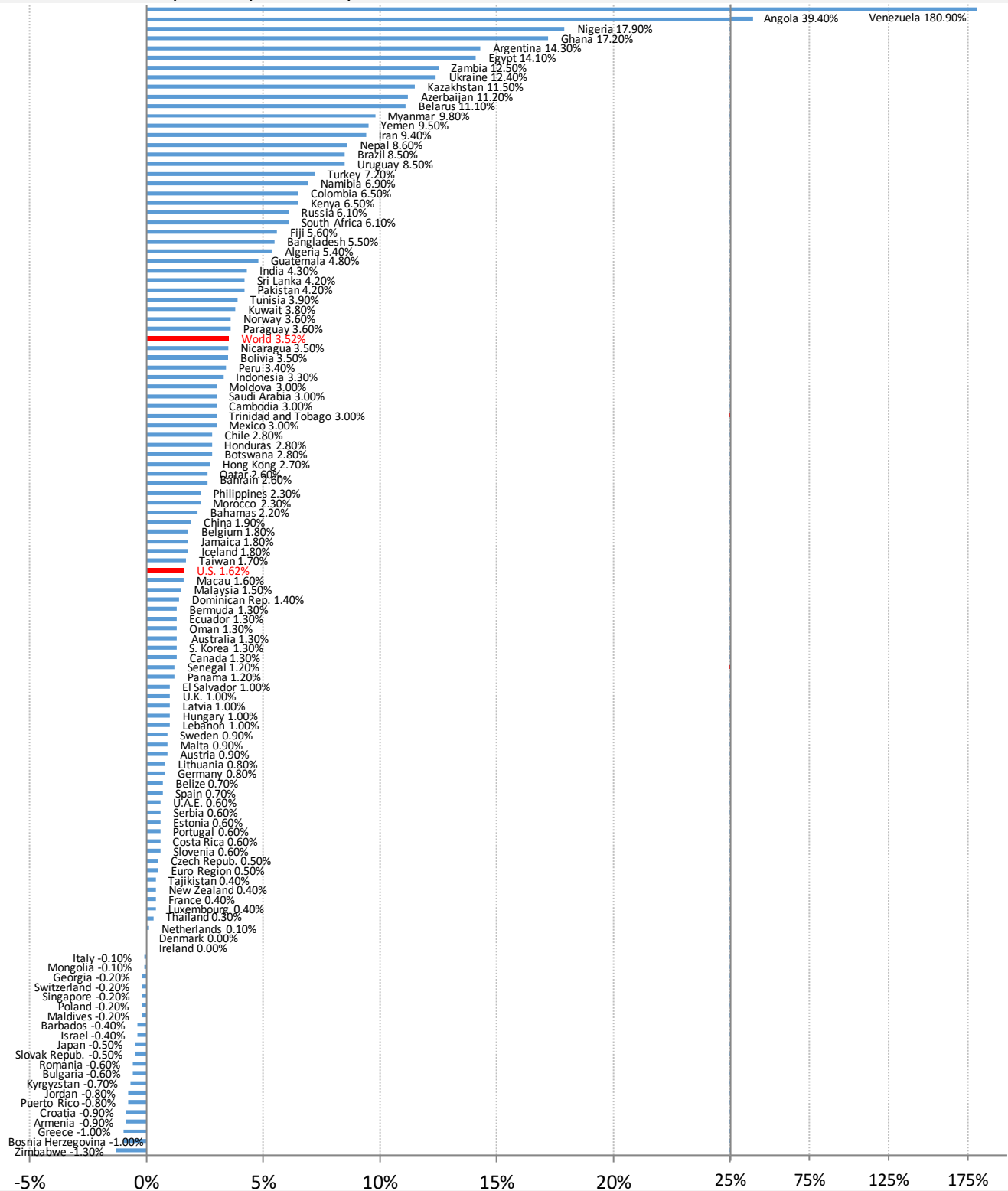
Donald Luskin: 312 273 6766 don@trendmacro.com
 Thomas Demas: 704 552 3625 tdemas@trendmacro.com

The deflation delusion: it's all about oil, and always has been
Cumulative growth of CPI from July 2008, the all-time high oil price



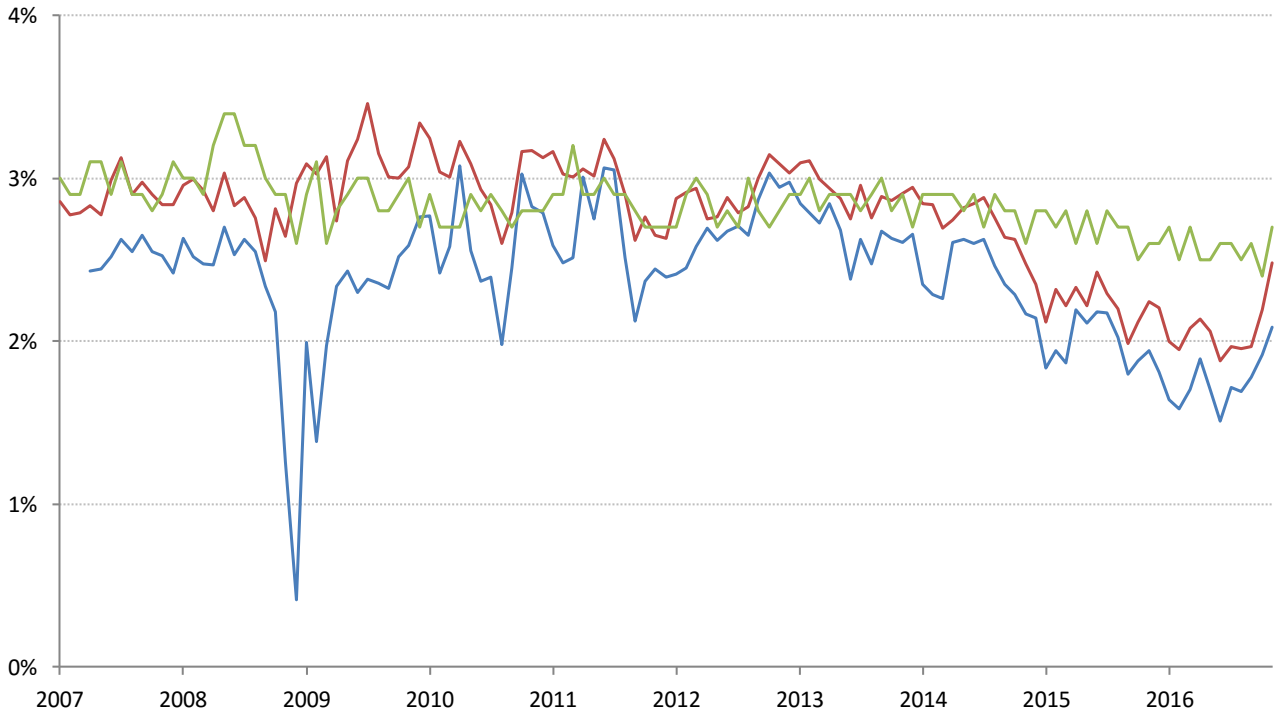
Source: Bloomberg, TrendMacro calculations

World round-up: CPI year-on-year



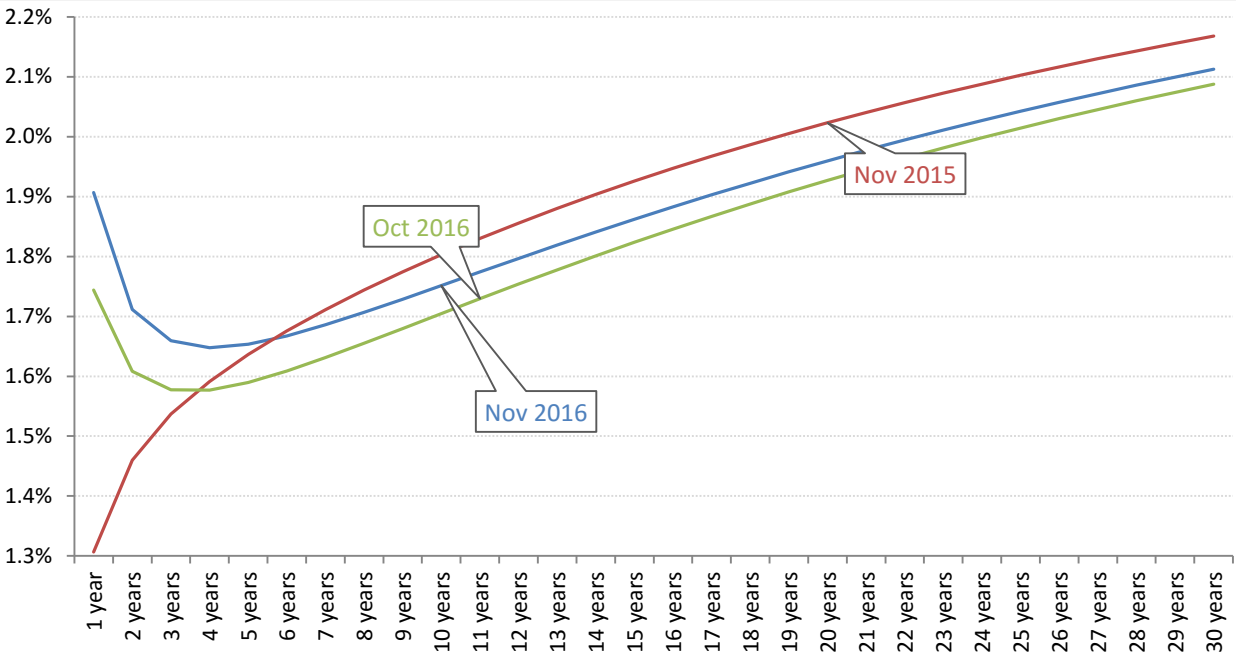
Source: Bloomberg, TrendMacro calculations

Implied 5-year inflation, 5 years forward — TIPS — Swaps — U. Michigan Survey



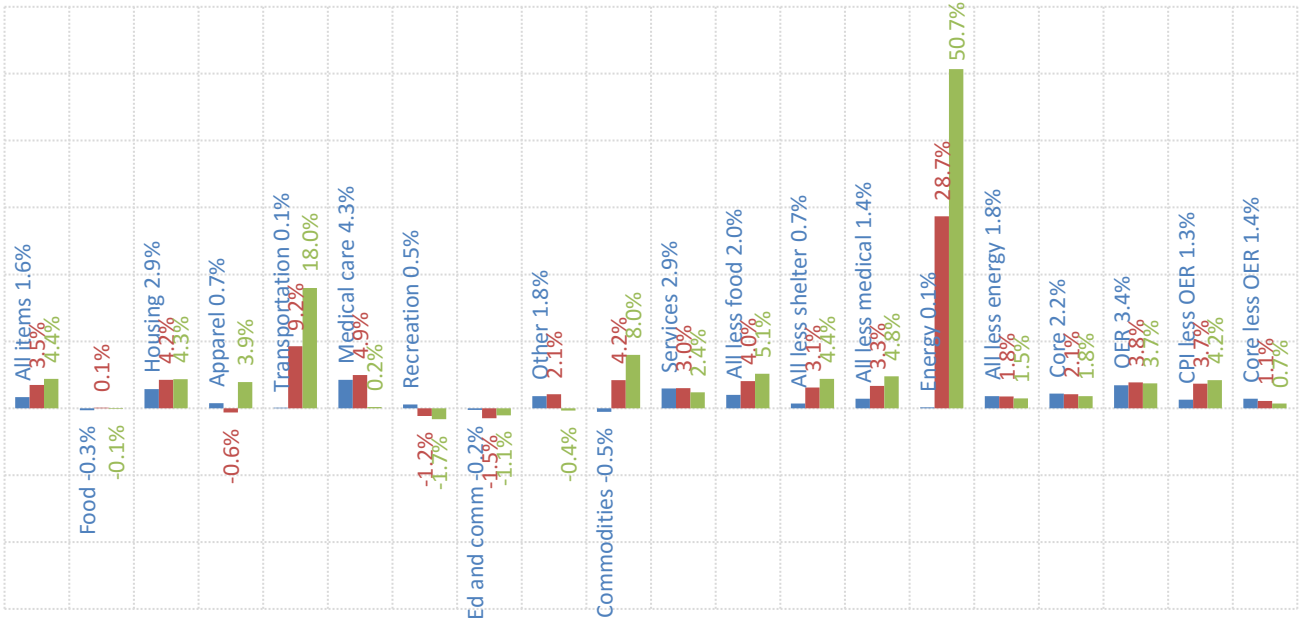
Source: Bloomberg, TrendMacro calculations

Swap-implied inflation yield curve, per annum



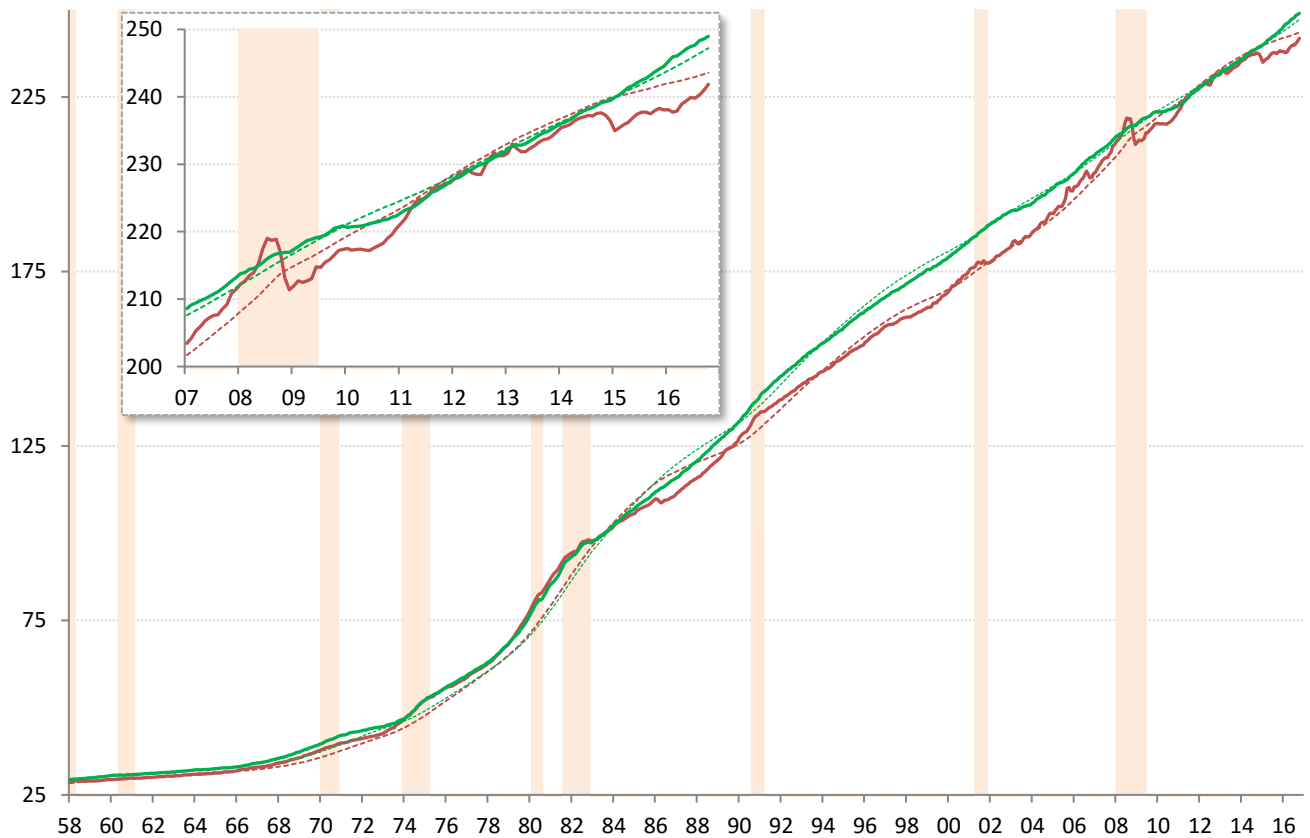
Source: Cleveland Fed, TrendMacro calculations

US CPI inflation by sector (SAAR) ■ 12-month ■ 3-month ■ 1-month



Source: BLS Consumer Price Index, TrendMacro calculations

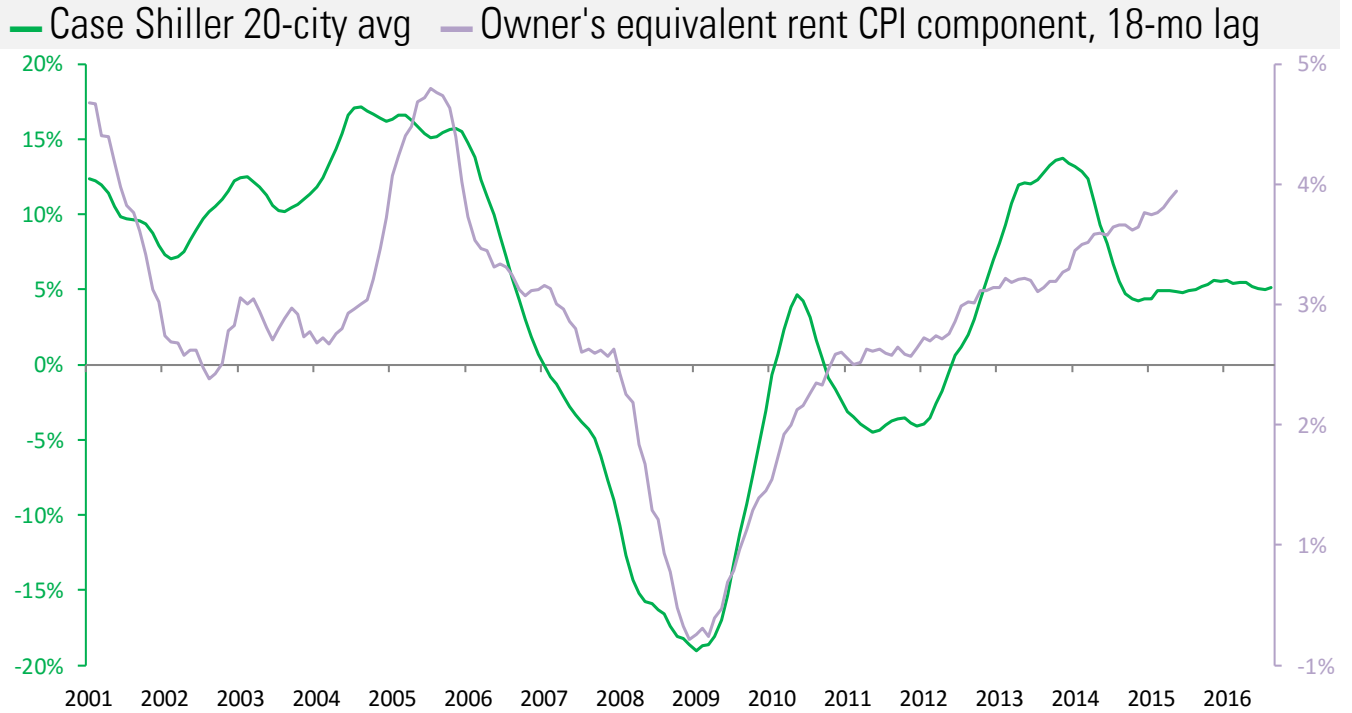
US CPI Core — Level ... 20-year trend ■ Recession



Source: BLS Consumer Price Index, TrendMacro calculations

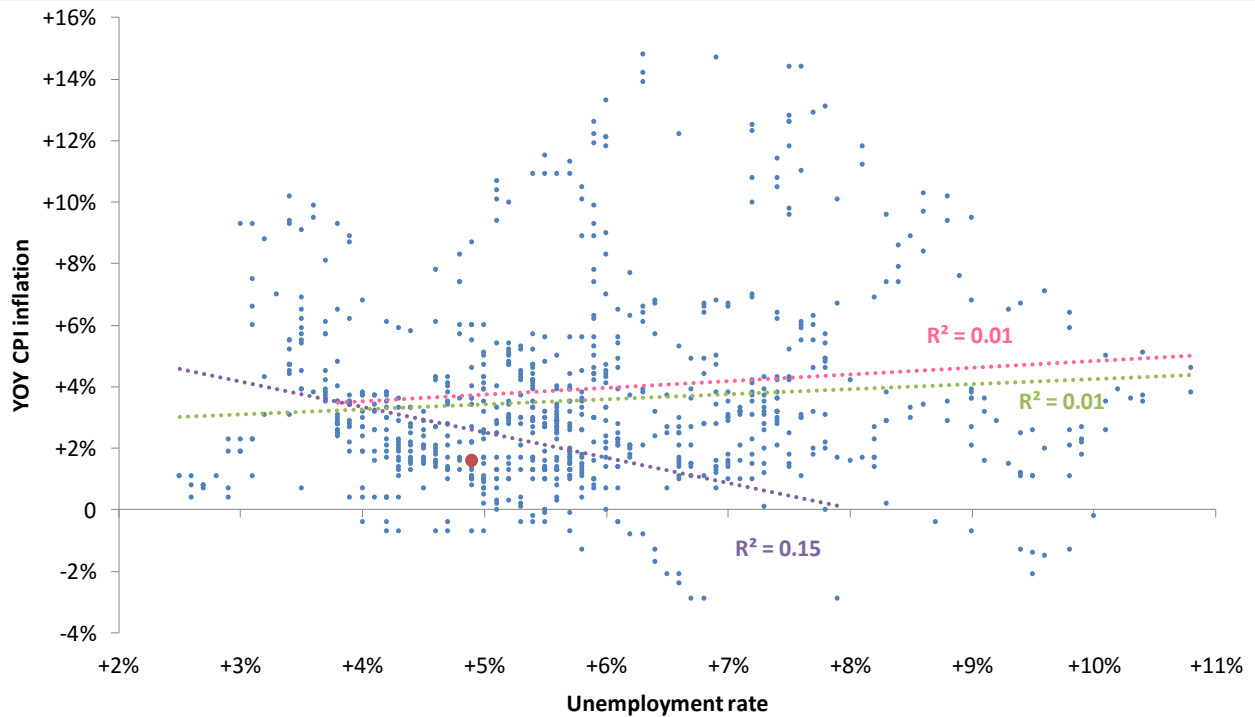
Housing leads US CPI

Year-over-year change



The world is flat: the vanishing Phillips Curve

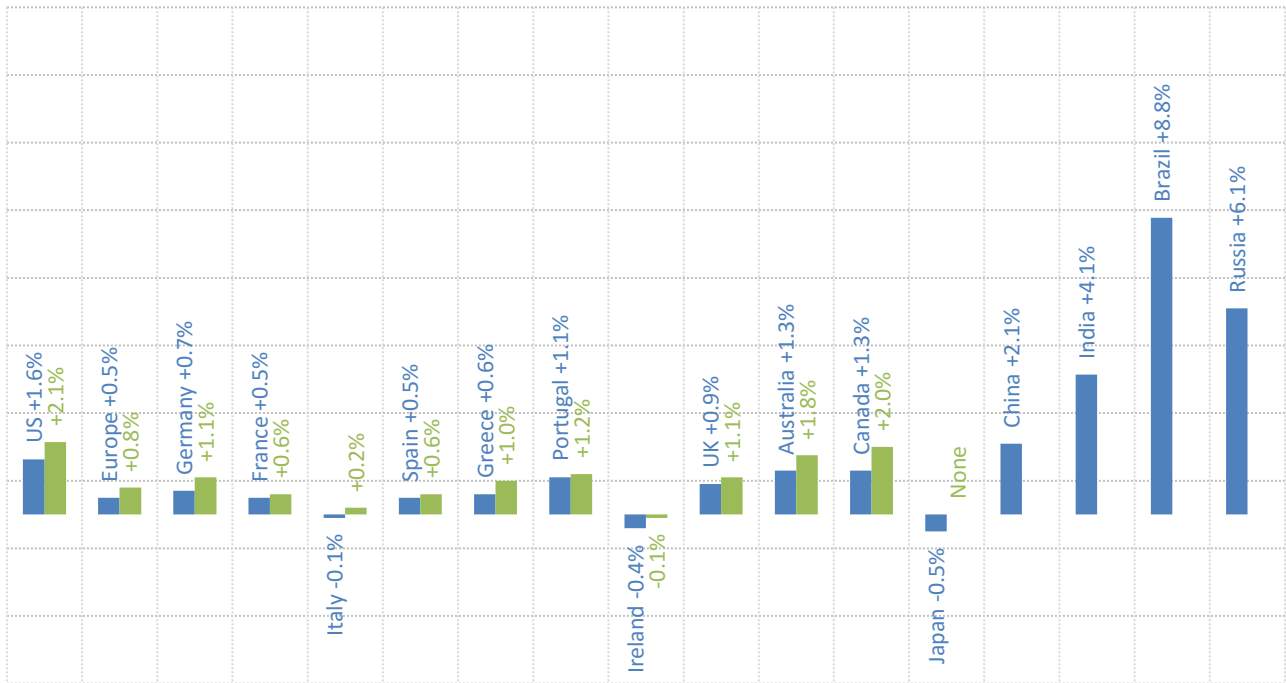
● Latest Linear trend: ● Pre-74 ● Post-74 ● All



Source: BLS Consumer Price Index, Current Population Survey

Major economies CPI, year on year

■ Headline ■ Ex-food and energy



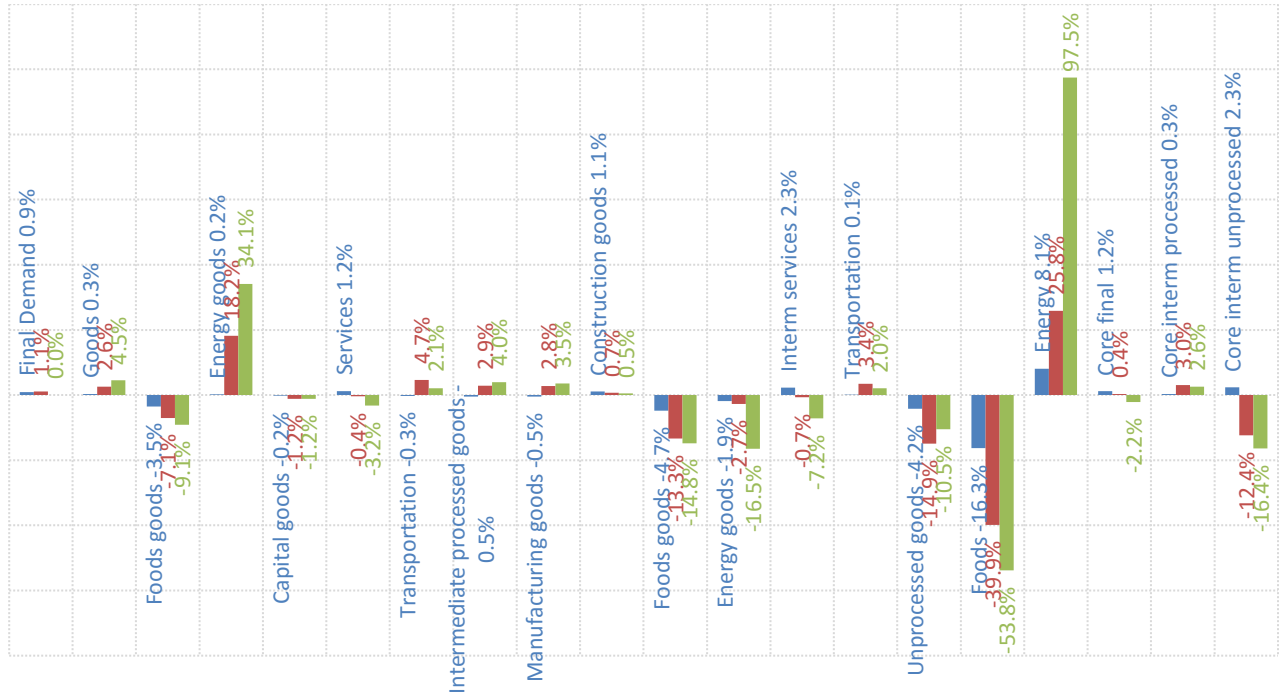
Source: Respective Statistical agencies, TrendMacro calculations

PPI data: what you need to know

	12-mo YOY	3-mo ann	1-mo ann	12 / 3 / 1-mo	13-mo YOY history
Final demand	+0.9%	+1.1%	unch		
Core	+1.2%	+0.4%	-2.2%		
Intermediate processed	-0.5%	+2.9%	+4.0%		
Core	+0.3%	+3.0%	+2.6%		
Intermediate unprocessed	-4.2%	-14.9%	-10.5%		
Core	+2.3%	-12.4%	-16.4%		

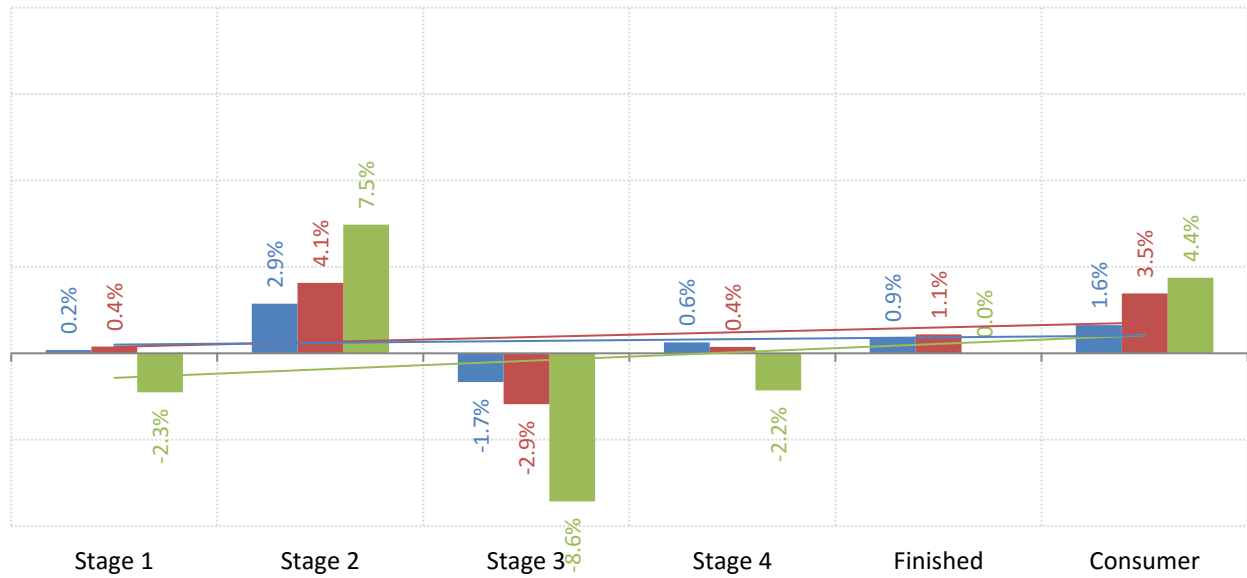
Source: BLS Producer Price Index, TrendMacro calculations

PPI inflation by sector (SAAR) ■ 12-month ■ 3-month ■ 1-month



Source: BLS Producer Price Index, TrendMacro calculations

The inflation pipeline (SAAR) ■ 12-month ■ 3-month ■ 1-month



Source: BLS Producer Price Index and Consumer Price Index, TrendMacro calculations