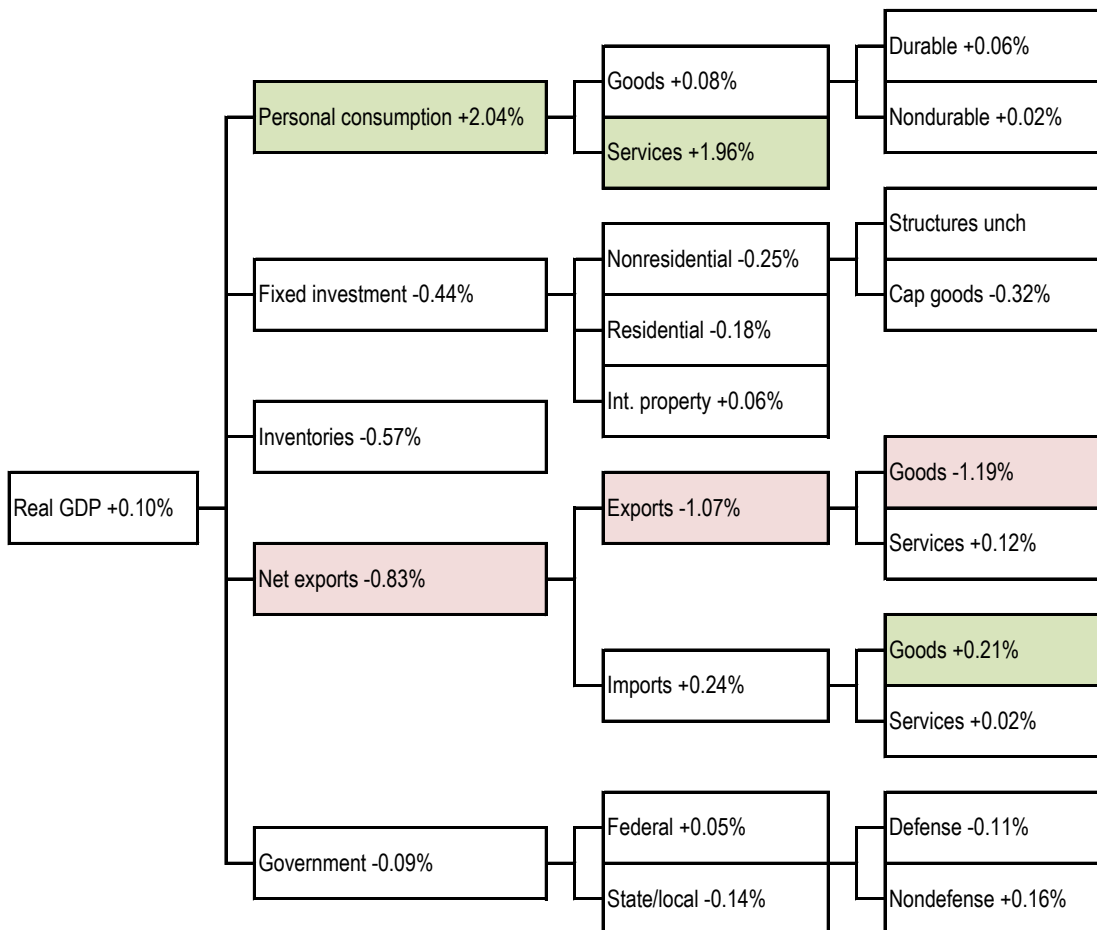


## Data Insights: GDP

Wednesday, April 30, 2014

Today's GDP data: what you need to know -- where did the growth come from?

Contributions to real, sequential quarter change, SAAR Biggest change per detail-level: ■ positive ■ negative



Source: Bureau of Economic Analysis

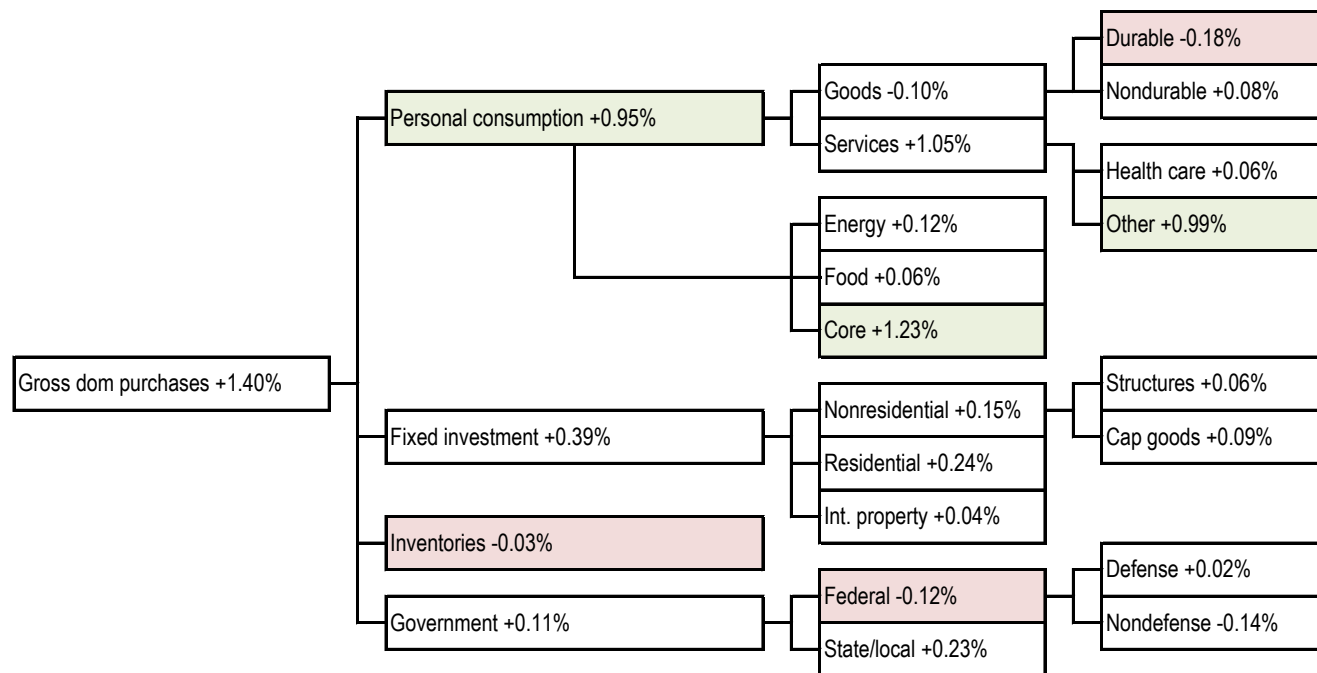
### For more information contact us:

Donald Luskin: 312 273 6766 [don@trendmacro.com](mailto:don@trendmacro.com)

Thomas Demas: 704 552 3625 [tdemas@trendmacro.com](mailto:tdemas@trendmacro.com)

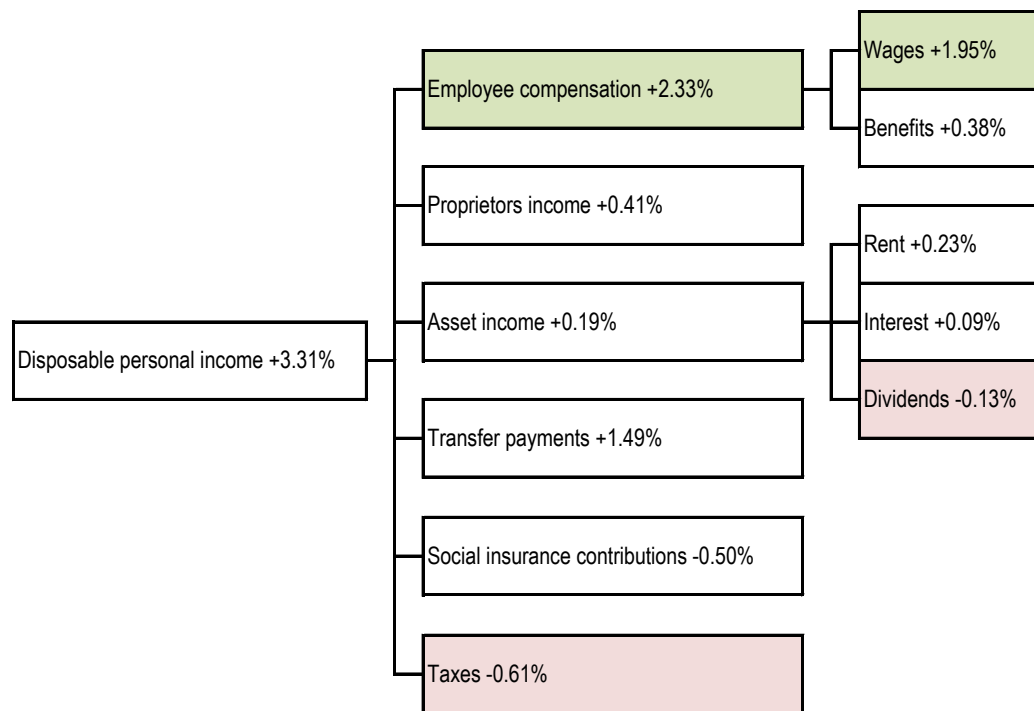
# Price index data: what you need to know -- where did the inflation come from?

Contribution to sequential quarter change, SAAR Biggest change per detail-level: ■ positive ■ negative



Source: Bureau of Economic Analysis, TrendMacro calculations

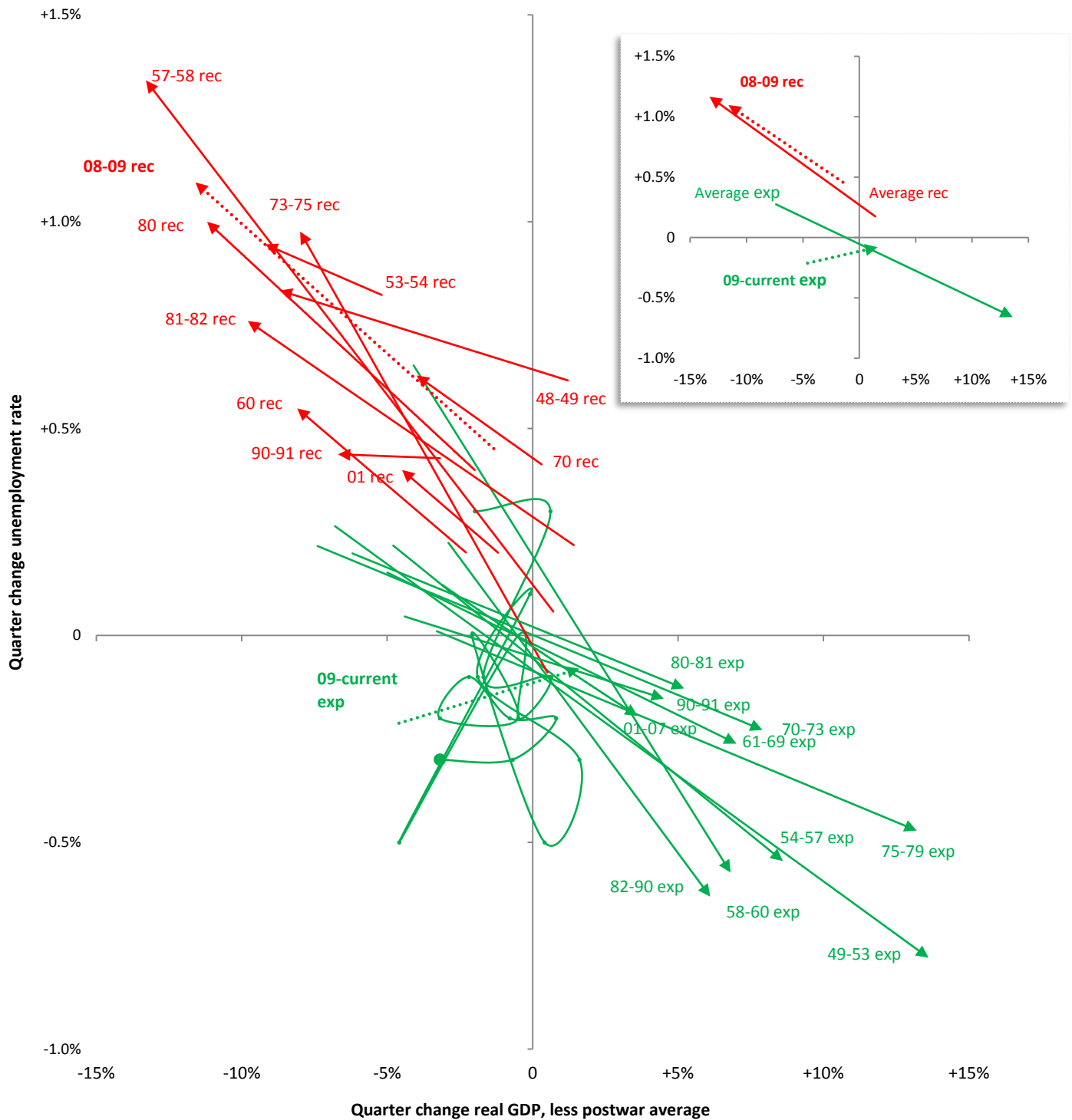
Personal income data: what you need to know -- where did the growth come from?  
 Contribution to nominal, seq quarter change, SAAR Biggest change per detail-level: ■ positive ■ negative



Source: Bureau of Economic Analysis, TrendMacro calculations

# Broken Okun's Law: real growth required to change unemployment

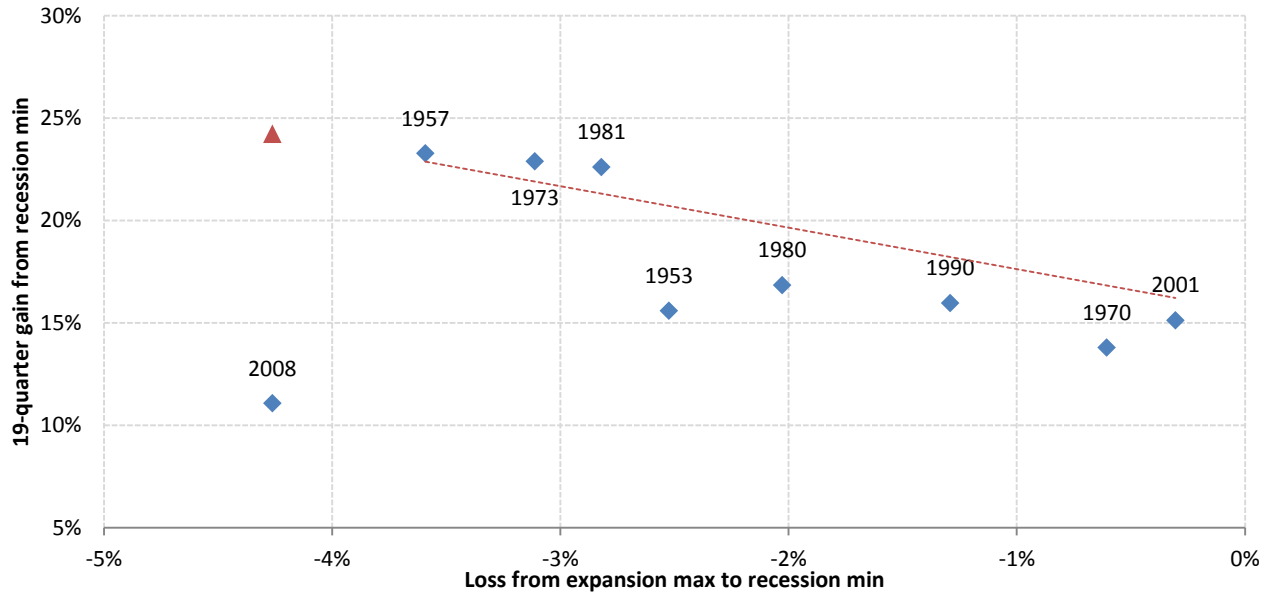
— Expansion — Recession Linear trend, plus monthly plots for 09-current expansion • Latest



Source: Bureau of Economic Analysis, BLS Current Population Survey, TrendMacro calculations

## The Zarnowitz Law: severity of output loss in recession, versus vigor of recovery

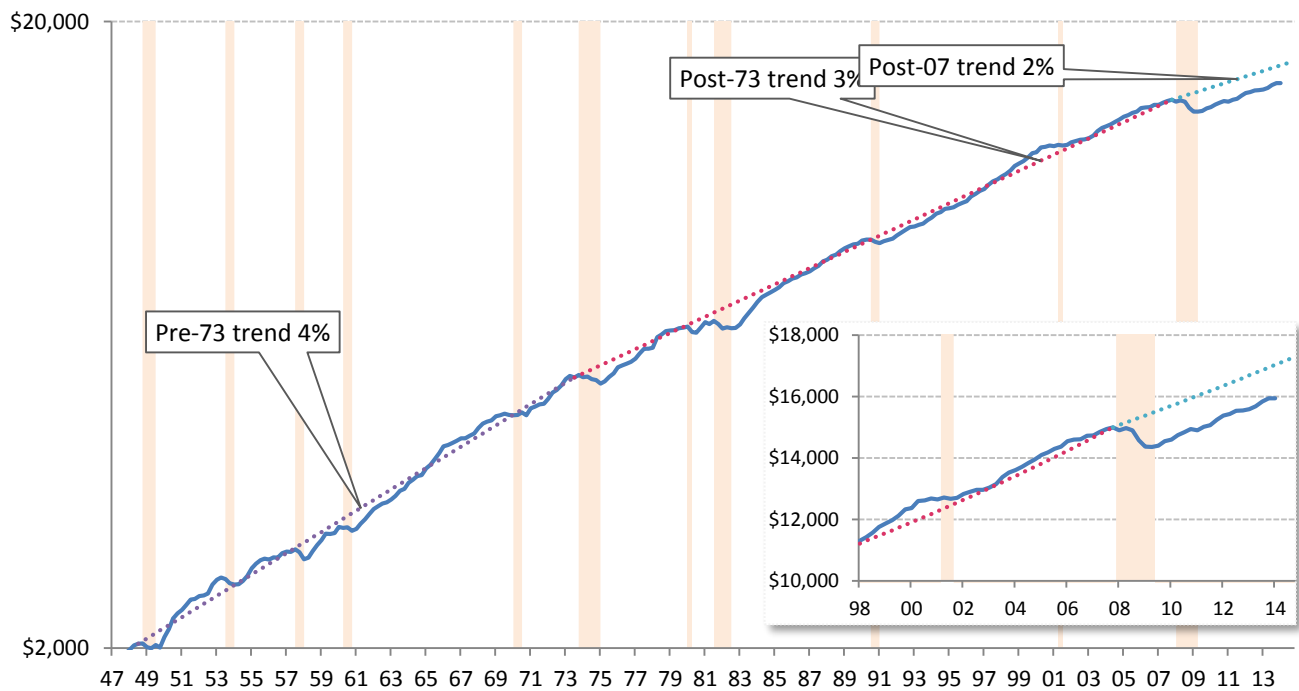
◆ Actual    - - - Regression for recessions 1948-2001    ▲ Theoretical for current recovery based on regression



Source: Bureau of Economic Analysis, National Bureau of Economic Research, TrendMacro calculations

## The plucked string theory: GDP reverts to trend after perturbation

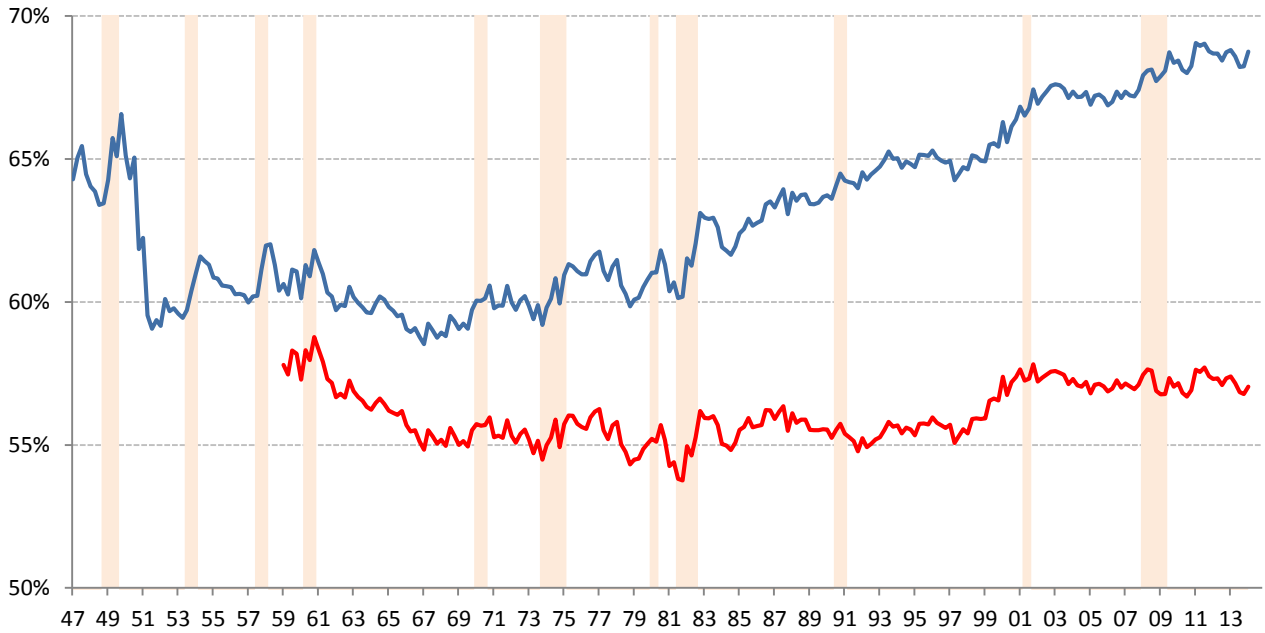
— Real GDP, USD billions, log scale    - - - '47-'74 3.99%    - - - '74-'07 trend 3.02%    - - - Post-'07 trend    ■ Recession



Source: Bureau of Economic Analysis, National Bureau of Economic Research, TrendMacro calculations

## "New normal" watch: personal consumption share of nominal GDP

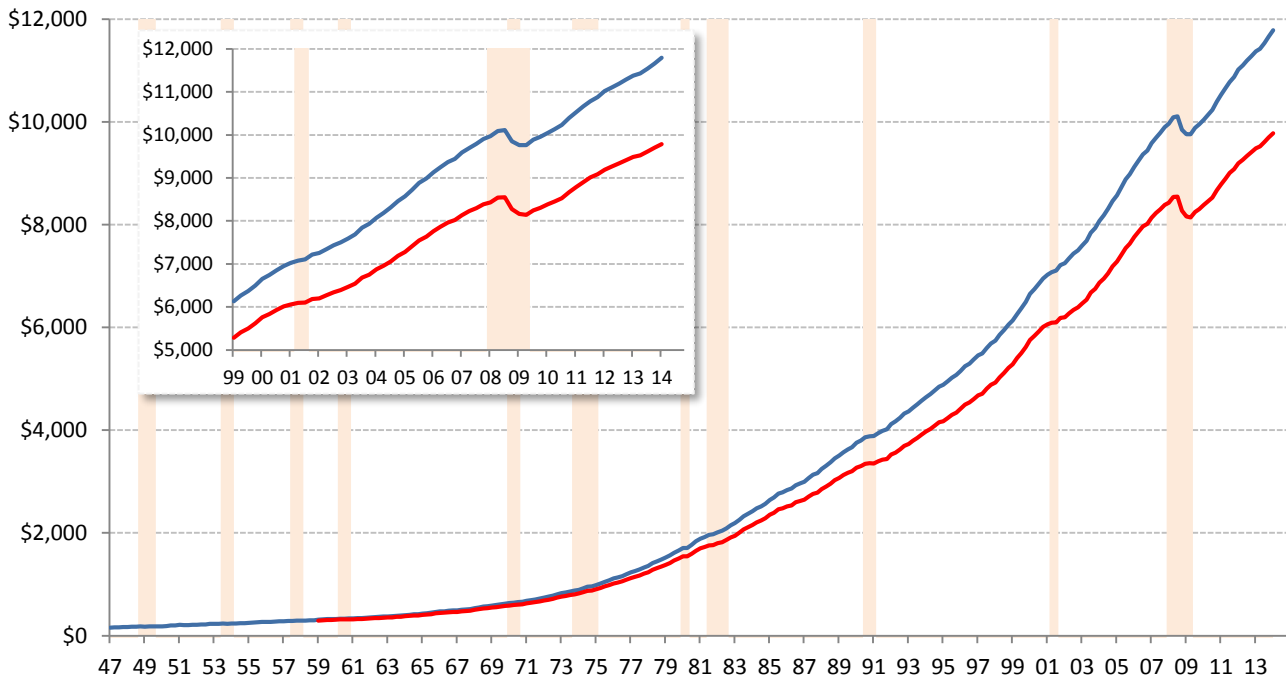
— Personal consumption expenditures — Ex-health care services — Recession



Source: Bureau of Economic Analysis, National Bureau of Economic Research, TrendMacro calculations

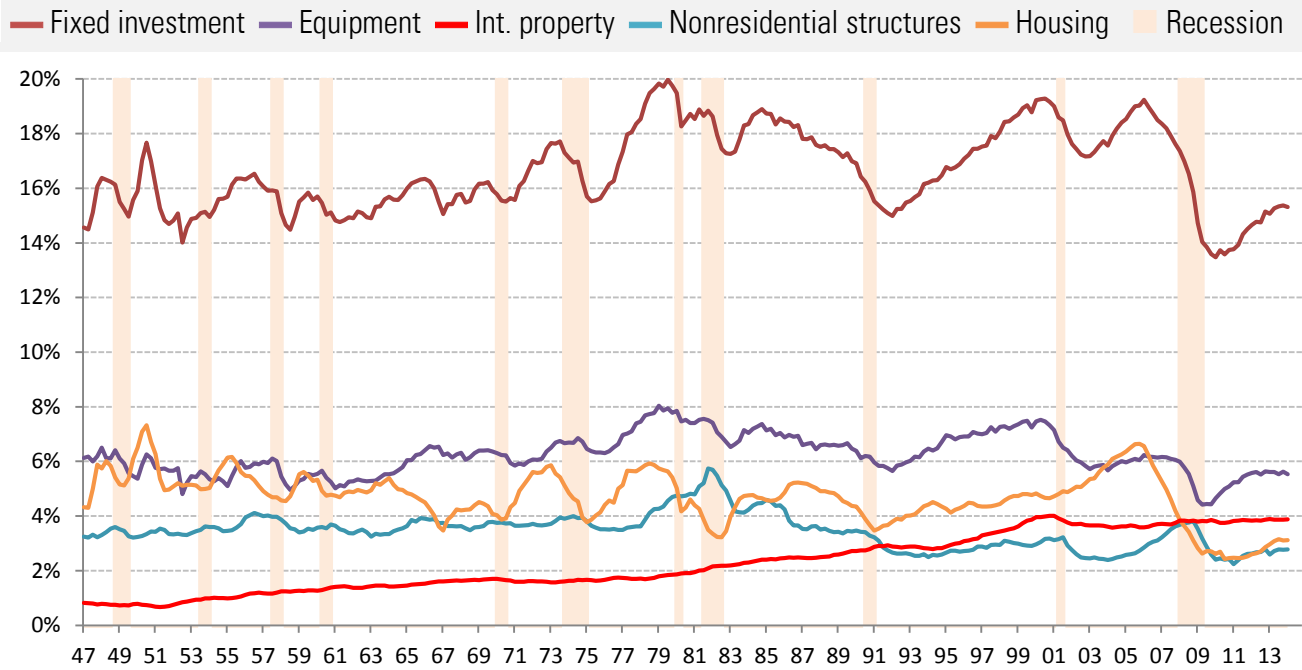
## "New normal" watch: nominal personal consumption expenditures

USD billions — Personal consumption expenditures — Ex-health care services — Recession



Source: Bureau of Economic Analysis, National Bureau of Economic Research, TrendMacro calculations

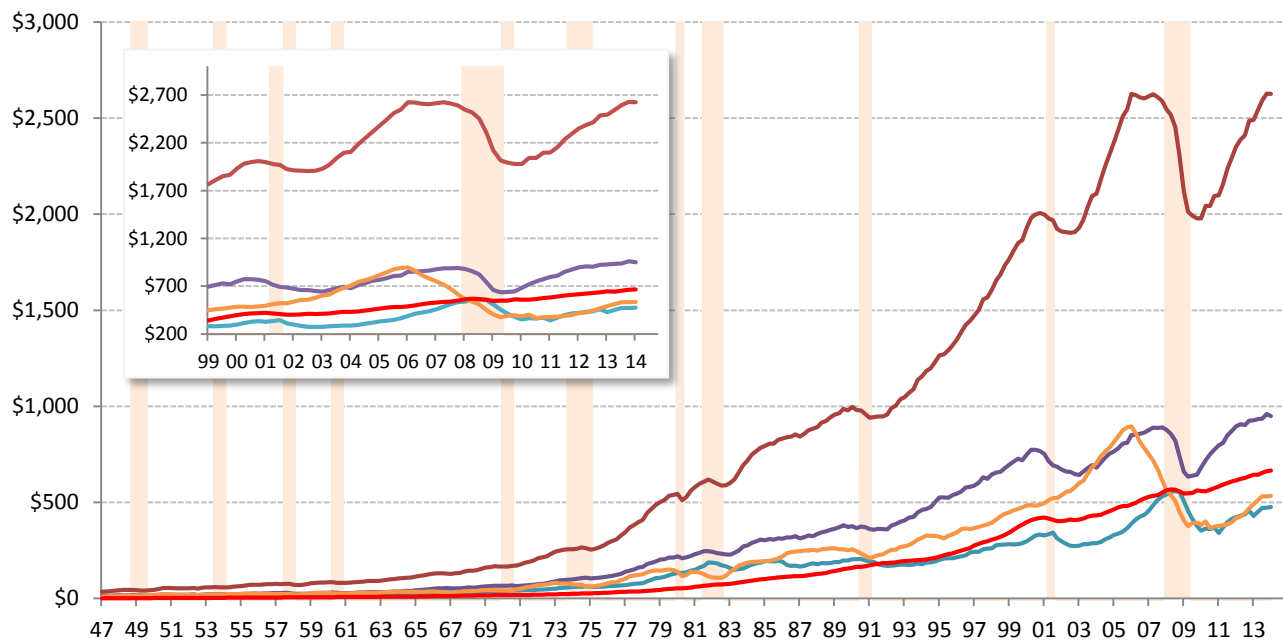
## Capital on strike: fixed investment share of nominal GDP



Source: Bureau of Economic Analysis, National Bureau of Economic Research, TrendMacro calculations

## Capital on strike: nominal fixed investment

USD billions — Fixed investment — Equipment — Int. property — Nonresidential structures — Housing



Source: Bureau of Economic Analysis, National Bureau of Economic Research, TrendMacro calculations